

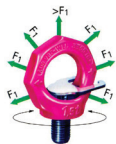
# Male swivelling lifting rings

Stock

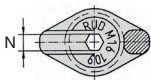
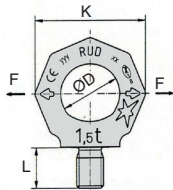
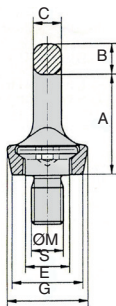
VRSF  RUD®

Swivelling eye ring

- With its distinctive star shape, this ring is clearly distinguishable from standard DIN580 lifting rings
- Colour : Pink epoxy powder coating, vibrant/fluorescent
- Inherently safe, required tightening torque can be achieved by hand, no torque spanner required



**4** Suitable for lifting in any direction  
Factor of safety = 4



 **IN STOCK\***  
Otherwise contact us

**CE**

## DISCOUNTS

Qty	1+	5+	10+	15+
Disc.	List	-3%	-6%	On request

Part number	SWL	ØM	A	B	C	ØD	E	G	K	L	N	S	Weight (kg)	Price each 1 to 4
VRS-F-M6	0,10t	M6	28	9	7	20	23	28	37	9	6	13	0,07	59,46 €
VRS-F-M8	0,30t	M8	35	11	9	25	25	30	47	12	6	16,3	0,12	49,13 €
VRS-F-M10	0,40t	M10	35	11	9	25	25	30	47	15	6	16,3	0,12	49,13 €
VRS-F-M12	0,75t	M12	42	13	10	30	30	34	56	18	8	19,8	0,19	60,62 €
VRS-F-M14	0,75t	M14	42	13	10	30	30	34	56	18	8	19,8	0,22	69,95 €
VRS-F-M16	1,50t	M16	49	15	13	35	36	40	65	24	10	23,5	0,36	69,95 €
VRS-F-M18	1,50t	M18	49	15	13	35	36	40	65	24	10	23,5	0,37	82,52 €
VRS-F-M20	2,30t	M20	58	17	16	40	41	50	76	30	12	29,3	0,60	92,57 €
VRS-F-M22	2,30t	M22	58	17	16	40	41	50	76	30	12	29,3	0,62	105,54 €
VRS-F-M24	3,20t	M24	70	20	19	49	51	60	92	36	14	35	1,06	123,10 €
VRS-F-M27	3,20t	M27	70	20	19	49	51	60	92	36	14	35	1,08	143,00 €
VRS-F-M30	4,50t	M30	87	26	24	60	66	75	114	45	17	44	2,08	192,71 €

\*Depending on availability - Dimensions in mm

# Male swivelling lifting rings

- **Marking** : Clear indication of maximum load for the least favourable lifting direction F (not permitted for DIN 580 lifting rings) . Also the SWL in the format supplied (in lbs).  
Marking on the ring : RUD, model (eg : VRS), CE, H1 traceability code for ring and thread. On the thread : Dimension M, RUD and T code

- Forged from 1.6541 steel, tempered and 100% electromechanically tested for cracks according to EN 1677-1

- Manufactured in Germany, 100% tested

- **Swivelling lifting ring VRS-F**

- For installation by hand, no tools required

- **Safety coefficient 4**

Threaded part > steel 1.0037 (acc EN 10025) or E24-2 (acc NF A 35-501). Countersink of threaded hole = nominal thread diameter. When assembling, check that the thread is fully screwed in as far as its base. The load must be in contact with the full surface of the base. When assembled the VRS ring must be able to rotate through 360°. The bolting surface F must be completely flat.

- Before lifting begins, adjust to the direction of lift.

- Components are patented, European patent EP 654 611

- Captive hexagonal headed screw, 100% tested for cracks. Insert the flat spanner into the hexagonal screw to tighten or loosen the screw by hand. Then remove the spanner.

- When tightening the screw with the spanner or an Allen key, apply a consistent force. Do not use an extension.



Conforms to European Directive 98/37/CE



## Comparison

DIN580-M20  
type ring



F : 6000kg



VRS-F-M80

- **Attention** : DIN 580 style lifting rings must always be fully screwed in and never subjected to bending or transversal loads ! For any lifting operation using 2 or more cables, the lifting ring must be adjusted to the direction of pull. This is only possible with the VRS which can be adjusted to any direction even when completely screwed in.

**Attention**: Read the instruction notice carefully.

We retain the right to modify technical information when necessary.