

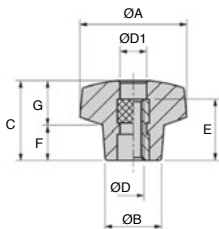
- **Operating element**
- **Materials:**
Black phenolic Duraplast
Insert; brass or stainless steel

Advantages

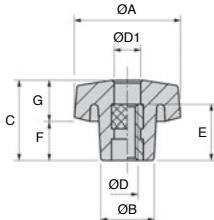
- Easy grip
- Temperature resistant
- Good chemical resistance
- Easier to clean than technopolymer
- In machining applications, less likely to retain swarf

Good
resistance

brass or
stainless steel
insert



VBFP20-VBFP30-VBFP/SS



VBFP40 to VBFP70

DISCOUNTS

Qty	1+	10+	20+	50+	100+	200+
Disc.	List	-5%	-10%	-15%	-20%	On request

Part number	ØA	ØB	C	ØD	E	F	G	ØD1	Weight Price each	
									(g)	1 to 9
Brass insert										
VBFP20-M4	20	13	15	M4	11	7	8	7,5	6	4,00 €
VBFP20-M5	20	13	15	M5	11	7	8	7,5	7	4,14 €
VBFP20-M6	20	13	15	M6	11	7	8	7,5	10	4,21 €
VBFP30-M6	30	17	24	M6	15	11	12,5	9	16	4,83 €
VBFP30-M8	30	17	24	M8	15	11	12,5	9	17	5,08 €
VBFP40-M8	40	21	28	M8	18	13	15	11	29	5,87 €
VBFP40-M10	40	21	28	M10	18	13	15	11	31	5,91 €
VBFP50-M8	50	25	33	M8	18	15	18	13	43	7,31 €
VBFP50-M10	50	25	33	M10	18	15	18	13	45	7,39 €
VBFP50-M12	50	25	33	M12	18	15	18	13	47	7,39 €
VBFP60-M12	60	28	35	M12	25	15	20	13	70	9,23 €
VBFP70-M12	70	32	42	M12	25	21	21	13	96	11,21 €
VBFP70-M14	70	32	42	M14	25	21	21	15	94	11,21 €
VBFP70-M16	70	32	42	M16	25	21	21	17	93	12,40 €
Stainless steel insert										
VBFP20-M6/SS	20	13	15	M6	11	7	8	7,5	10	9,19 €
VBFP30-M6/SS	30	17	24	M6	15	11	12,5	9	16	9,81 €
VBFP40-M8/SS	40	21	28	M8	18	13	15	11	34	10,99 €
VBFP50-M8/SS	50	25	33	M8	18	15	18	13	49	11,90 €
VBFP50-M10/SS	50	25	33	M10	18	15	18	13	52	12,50 €

Dimensions in mm