

Nut for toggle clamps

SLH-M

Round ended nut

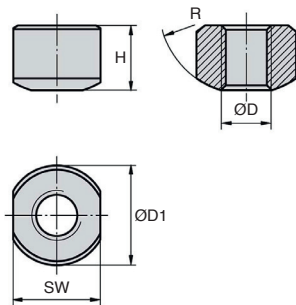
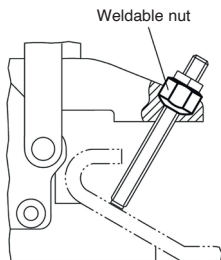
- Nut for toggle clamps

- Material : steel

- Finish : oxidised

Advantage

- Nut can be welded



DISCOUNTS

Qty	1+	6+	15+	20+
Disc.	List	-5%	-10%	On request

Part number	ØD	H	ØD1	SW	R	Price each
						1 to 5
SLH-M4	M4	5,2	8	7	7	3,36 €
SLH-M5	M5	6,7	10	9	9	3,55 €
SLH-M6	M6	9,5	13,5	12,2	10	3,89 €
SLH-M8	M8	12,8	18	15,3	12	4,44 €
SLH-M10	M10	12,1	20	18,2	14	4,74 €
SLH-M12	M12	14,8	23	20	16	5,14 €

Dimensions in mm