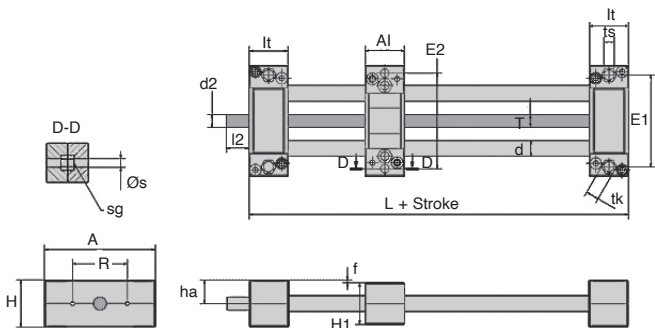
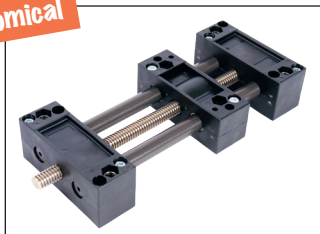


- Plastic construction
- Light weight
- Low cost version
- Corrosion resistant
- Available in 2 sizes
- Supplied without handle

**Economical**



Part number	A	Al	H	E1	E2	L	R	f	lt	tk	ts
SHTP-01-06	45	45	19	38	36,5	67	25	1	11	8	4,2
SHTP-01-12	85	30	36	70	73,0	90	42	2	30	10	6,6
SHTP-02-12	85	30	36	70	73,0	90	42	2	30	10	6,6

Part number	s	sg	d	T	l2	d2 <sup>+</sup> standard	ha	H1
SHTP-01-06	5,0	-	6	M8	15	M8	9	18
SHTP-01-12	6,3	M6	12	TR10x2	17	TR10x2	16	32
SHTP-02-12	6,3	M6	12	TR10x2	17	TR10x2	16	32

Dimensions in mm

## DISCOUNTS

Qty	1+	2+	3+
Disc.	List	-10%	On request

Part number	Max stroke (mm)	Aluminium profile		Notes
		Weight (kg)	Add weight (/0.1m stroke)	
SHTP-01-06	300	0,11	0,06	Square carriage with 4 symmetrical mounting holes
SHTP-01-12	750	0,35	0,11	Smooth guides and nuts in iglidur®J
SHTP-02-12	750	0,35	0,11	-

Part number	Stroke (mm)	Stock*	Price each
SHTP-01-06-100	100	✓	106,40 €
SHTP-01-06-250	250	✓	133,95 €
SHTP-01-12-100	100	✓	147,83 €
SHTP-01-12-250	250	✓	184,79 €
SHTP-01-12-500	500	-	221,27 €
SHTP-02-12-100	100	✓	112,31 €
SHTP-02-12-250	250	✓	139,87 €
SHTP-02-12-500	500	-	185,77 €

Dimensions in mm

Maintenance free

### Materials:

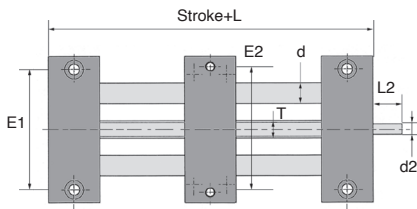
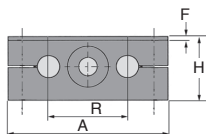
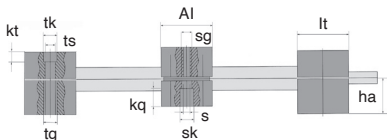
- Shaft: hard anodised aluminium
- Leadscrew: Steel C15
- Smooth bearings and films: Iglidur® J
- Nut: Iglidur® W300

### Advantages

- Requires absolutely no maintenance
- No corrosion
- Very light
- Nut for trapezoidal screw manufactured from high performance polymers
- Cross pieces and slides manufactured from anodised aluminium

### Options

- SHTC12 max. stroke 1000mm
- SHTC20 and SHTC30 max. stroke 2000mm

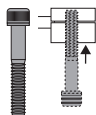


Part number	A -0,3	Al -0,3	H	E1 ±0,15	E2 ±0,15	L	R	F	It	tk	ts	tg
SHTC-12	85	30	34	70	73	90	42	2	30	11	6,6	M8
SHTC-20	130	36	48	108	115	108	72	2	36	15	9,0	M10
SHTC-30	180	50	68	150	158	150	96	4	50	20	13,5	M16

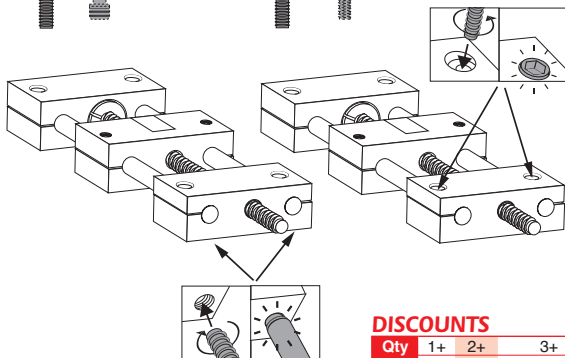
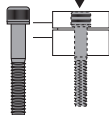
Part number	kt	S	sk	sg	kq	d	T	L2	d2 (h9)	ha
SHTC-12	6,4	6,3	10	M6	6,0	12	TR10x2	17	TR10x2*	18
SHTC-20	8,6	6,4	11	M8	7,0	20	TR18x4	26	12	23
SHTC-30	12,6	11,0	18	M12	10,6	30	TR24x5	38	14	36

\*TR10x2 supplied with a non machined spindle end - Dimensions in mm

CHC socket screw



CHC socket screw



## DISCOUNTS

Qty	1+	2+	3+
Disc.	List	-10%	On request

Part number	Max. axial load			Radial load	
	Static (N)	Dynamic (MPaxm/s) axial bearing	Dynamic (MPaxm/s) trapezoidal nut	Static (N)	Dynamic (N)
SHTC-12	700	0,23	0,08	1400	1000
SHTC-20	1600	0,23	0,08	3200	3000
SHTC-30	2500	0,23	0,08	5000	5000

Part number	Max. speed		Stroke length (mm)	Price each
	Of screw (rpm)	Of travel (m/min)		
SHTC-12-100	500	1,0	100	289,56 €
SHTC-12-250	500	1,0	250	316,85 €
SHTC-12-500	500	1,0	500	362,36 €
SHTC-20-100	300	1,2	100	413,67 €
SHTC-20-250	300	1,2	250	447,79 €
SHTC-20-500	300	1,2	500	504,68 €
SHTC-20-1000	300	1,2	1000	618,45 €
SHTC-30-100	220	1,1	100	661,88 €
SHTC-30-250	220	1,1	250	709,74 €
SHTC-30-500	220	1,1	500	789,49 €
SHTC-30-1000	220	1,1	1000	948,99 €

# DryLin<sup>®</sup> linear table

## Construction and characteristics

DryLin<sup>®</sup> linear tables are suitable for many different positioning applications. The linear positioning is achieved by means of a trapezoidal leadscrew that can be operated manually or by motor.

The maximum linear speed is 1 m/min.

The suitability of a linear slide unit for an application can be checked using the graphs below.

The following trapezoidal leadscrew drive sizes are used in this range of linear tables:

- TR 10x2: SHT-12, SHTC-12, SHTP-12, SLW-1040

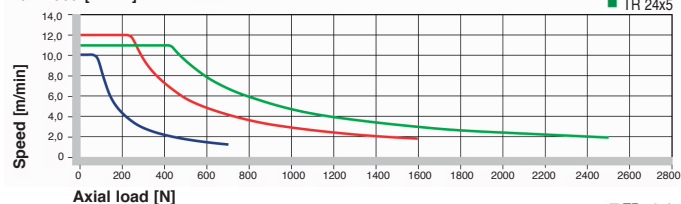
- TR 18x4: SHT-20, SHTC-20, SLW-2080

- TR 24x5: SHT-30, SHTC-30

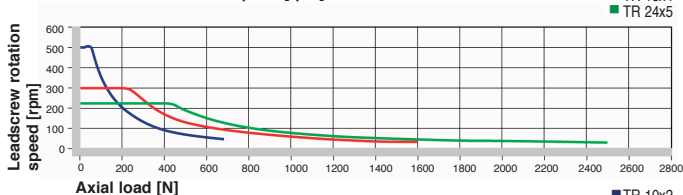
Please note that the loads given are axial loads. Radial loads are not given for trapezoidal leadscrews. For horizontal mounting with symmetrical loads, the following equation can be used:

$F_{axial} = F_{radial} \times 0.25$  (for horizontal mounting)

Max. feed [m/min]



Maximum leadscrew rotation speed [rpm]



Drive torque [Nm]

