

Hypoid gearbox

Sta

RFK38B

Torque up to 200Nm

- Ideal gearbox for use in the food industry
- Ratios from 7.5:1 to 60:1
- 2-stage reduction
- B14 flange
- Rounded and polished surfaces to avoid material retention
- Lubricated using food quality grease
- 90% efficient
- Material:
 - 316 stainless steel housing

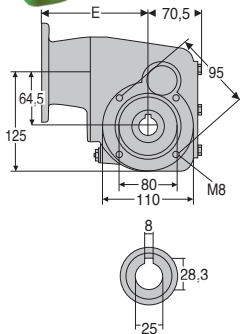
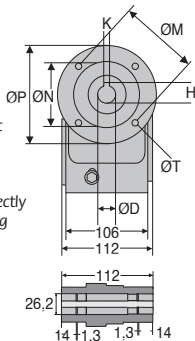


Accessories

- Can be used with a DER 4-pole motor to create a motor-gearbox
- Torque arms, mounting bracket and protective cover

Info

- All information is engraved directly on to gearbox rather than being on a tag plate to avoid accumulating dirt etc.



Flange dimensions

	ØD	K	H	ØP	ØM	ØN	E	ØT
Flange 71B14	14	5	16,3	105	85	70	112,5	7
Flange 80B14	19	6	21,8	120	100	80	132,5	7
Flange 90B14	24	8	27,3	140	115	95	132,5	9

Output shaft

DISCOUNTS

Qty	1+	2+	4+
Disc.	Net	-5%	On request

Part N°			Nominal reduction ratio	Actual reduction ratio	Price each
Flange 71B14	Flange 80B14	Flange 90B14			
	RFK38B-7.5-80B14/SS	RFK38B-7.5-90B14/SS	7,5	7,6	1 051,60 €
	RFK38B-10-80B14/SS	RFK38B-10-90B14/SS	10	10,5	1 051,60 €
	RFK38B-12-80B14/SS	RFK38B-12-90B14/SS	12,5	12,67	1 051,60 €
RFK38B-15-71B14/SS	RFK38B-15-80B14/SS	RFK38B-15-90B14/SS	15	14,67	1 051,60 €
RFK38B-20-71B14/SS	RFK38B-20-80B14/SS	RFK38B-20-90B14/SS	20	20,25	1 051,60 €
RFK38B-25-71B14/SS	RFK38B-25-80B14/SS	RFK38B-25-90B14/SS	25	24,44	1 051,60 €
RFK38B-30-71B14/SS	RFK38B-30-80B14/SS	RFK38B-30-90B14/SS	30	30,31	1 051,60 €
RFK38B-40-71B14/SS	RFK38B-40-80B14/SS		40	39,29	1 051,60 €
RFK38B-50-71B14/SS	RFK38B-50-80B14/SS		50	48,71	1 051,60 €
RFK38B-60-71B14/SS	RFK38B-60-80B14/SS		60	60,5	1 051,60 €

All dimensions in mm