

Contatto acciaio/acciaio  
o inox/inox

**RAS**  
**RASs**

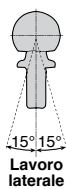
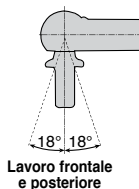
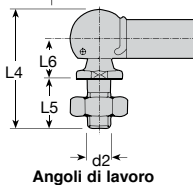
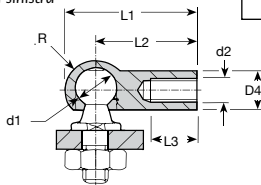
- **A norma DIN 71802**
- Angolo di lavoro:  
Laterale  $\pm 15^\circ$   
Frontale e posteriore  $\pm 18^\circ$
- Materiale:  
Acciaio zincato passivato  
Inox 303
- La sfera è trattenuta in sede da un fermo
- Filettatura a sinistra: solo la filettatura femmina è inclinata a sinistra

in acciaio  
o inox



**Vantaggi**

- Resiste all'usura



Misure	Fissaggio A/F	Forza statica max. kp radiale e assiale
M5	7	30
M6	8	70
M8	11	150
M10	13	200
M12	13	200

**SCONTI PER QUANTITÀ**

Qtà	1+	6+	20+	40+	60+
Sc.	Prezzo	-15%	-20%	-30%	Su richiesta

Codice												Stock*	Stock*	Prezzo unit. da 1 a 5		
Acciaio	Inox	d1	d2	D4	L1	L2	L3	L4	L5	L6	R	Acciaio	Inox	Acciaio	Inox	
<b>Filettatura a destra</b>																
RAS5	RAS5/SS	8	M5	8	28,5	22,0	10,2	25,0	10,2	9,0	6,4	✓	✓	4,83 €	7,12 €	
RAS6	RAS6/SS	10	M6	10	32,5	25,0	11,5	30,0	12,5	11,0	7,5	✓	✓	5,01 €	7,28 €	
RAS8	RAS8/SS	13	M8	13	39,5	30,0	14,0	38,0	16,5	13,0	9,7	✓	✓	6,11 €	9,29 €	
RAS10	RAS10/SS	16	M10	16	47,0	35,0	15,5	47,5	20,0	16,0	12,0	✓	✓	8,25 €	16,46 €	
RAS12	RAS12/SS	16	M12	16	47,0	35,0	15,0	47,5	20,0	16,0	12,0	✓	✓	11,62 €	19,29 €	
<b>Filettatura a sinistra</b>																
RAS5L	-	8	M5	8	28,5	22,0	10,5	25,0	10,2	9,0	6,4	✓	-	5,59 €	-	
RAS6L	-	10	M6	10	32,5	25,0	11,5	30,0	12,5	11,0	7,5	✓	-	5,64 €	-	
RAS8L	-	13	M8	13	39,5	30,0	14,0	38,0	16,5	13,0	9,7	✓	-	6,75 €	-	
RAS10L	-	16	M10	16	47,0	35,0	15,5	47,5	20,0	16,0	12,0	✓	-	8,90 €	-	
RAS12L	-	16	M12	16	47,0	35,0	15,0	47,5	20,0	16,0	12,0	✓	-	13,79 €	-	

\*Nei limiti delle disponibilità - Dimensioni in mm