

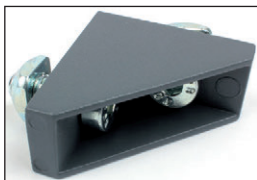
Bracket for aluminium profiles

Stock

PRF **MiniTec**

Support bracket

- Can be used for all types of construction, recommended for use when adding profiles to existing structures
- Use to reinforce structures
- Can be positioned anywhere along the profile length
- For heavy loads, use multiple brackets
- Fixing kit supplied
- Material: grey powder coated aluminium GD



Accessories

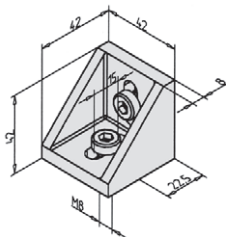
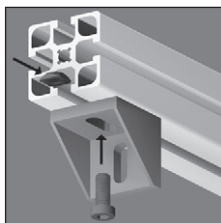
- Nut with sprong tab PRF-ECL

Special application

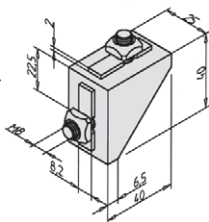
- PRF25-E bracket has a centred section that aligns along profile slot to prevent twisting

Info.

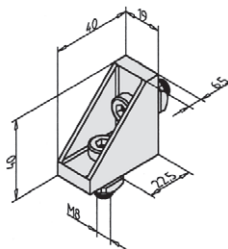
- *Given for applications using two brackets; when using a single bracket, maximum load is reduced, please contact us for details



PRF45-E



PRF25-E



PRF19-E

DISCOUNTS

Qty.	1+	50+	100+
Disc.	List	-5%	On request

Part number	Max. load* (N)	Max. torque (Nm)	For profile	Tightening torque (Nm)	Stock*	Price each 1 to 49
PRF19-E	1200	400	PRF19, PRF32	20	✓	3,98 €
PRF25-E	1200	400	PRF19, PRF32, PRF45	20	✓	4,57 €
PRF45-E	1200	400	PRF45	20	✓	3,98 €

*Depending on availability - Dimensions in mm