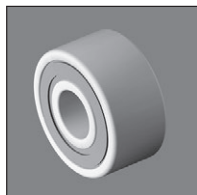
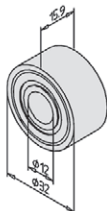
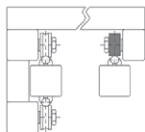


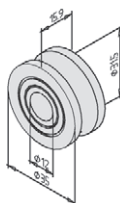
Roller wheel for aluminium profile

Roller for linear guiding shaft **MiniTec** PRFGAL

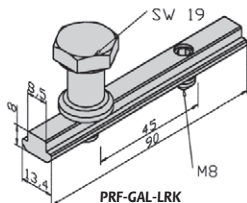
- **Guiding wheel**
- Double row bearing
- Roller **PRF-GAL** can compensate for small amounts of backlash for parallel working guidance systems
- **PRF-GAL-12** is used with a $\varnothing 12$ mm guide shaft such as **Z-12-3000A** or **Z-12-3000B**
- Material: steel



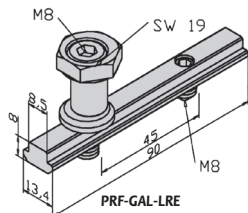
PRF-GAL



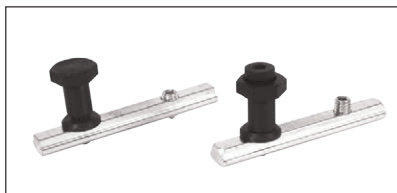
PRF-GAL-12



PRF-GAL-LRK



PRF-GAL-LRE



PRF-GAL-LRK

PRF-GAL-LRE

DISCOUNTS

Qty.	1+	50+	100+
Disc.	List -5%	On request	

Part number	Profile	Static (N)	Load Dynamic(N)	Weight (kg)	Stock*	Price each 1 to 49
Roller						
PRF-GAL	Flat	5100	8600	0,060	-	27,77 €
PRF-GAL-12	Concave $\varnothing 12$	6000	10500	0,068	✓	20,63 €
Fixing kit for roller						
PRF-GAL-LRK	concentric	-	-	0,100	✓	12,91 €
PRF-GAL-LRE	Eccentric	-	-	0,100	✓	16,02 €

*Depending on availability - Dimensions in mm