

# Fastener for aluminium profile

PRF **MiniTec**

Universal fastener

FIXUNI

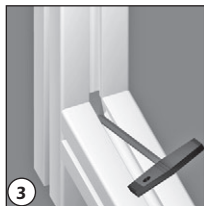
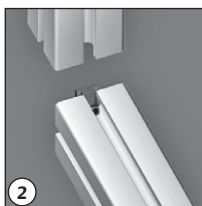
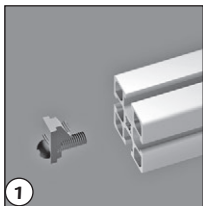
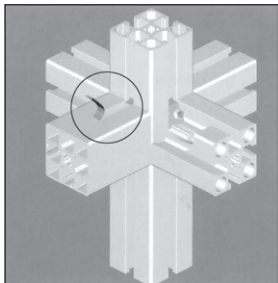
## Uses

- Low cost fastening requiring little preparation
- Used for different assembly types

## Central hole

- Directly accepts M8 screws

Quick-fixing



## Assembly

1. Tap the central hole of the first profile (1) using a fluteless M8 tap.  
Lightly attach the fastener to the end of the profile using the M8 screw (do not screw in completely)
2. Attach the second profile (2) in the required position.
3. Tighten the M8 grub screw with an SW4 hexagonal key or the PRF-TOOL-H4 tool.  
Max. Suggested torque 12Nm

## Advantages

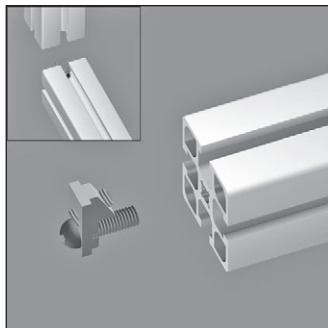
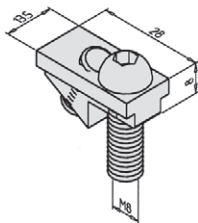
- Ends of profiles remain available
- Fastener is not visible
- Profiles can be repositioned/adjusted at any time
- Assembly will not twist
- Maximum load allowed: 6000N
- Cross joints in 3 dimensions can be created
- Joint can conduct electricity for bonding purposes.

**Profile assembly**

- Can be used to join all profile types
- Use multiple fasteners for longer lengths
- Materials:
- Fastener: electroplated chromed steel or stainless steel
- Round headed M8 screw, 25mm long.

**Assembly**

- Lightly attach the fastener into the slot on the profile (do not tighten)
- Slide the fastener in the slot to the required position
- Tighten the M8 grubscrew with an SW4 hexagonal key or the **PRF-TOOL-H4** tool

**No drilling****DISCOUNTS**

Qty.	1+	50+	100+
Disc.	List -5%	On request	

Part number	For profile	Tightening torque (Nm)	Weight (kg)	Stock*	Price each 1 to 49
PRF-FIX-UNI	All type of PRF profile	10,0	0,029	✓	5,18 €
PRF-FIX-UNI/SS	Stainless PRF/SS profile	01,2	-	✓	11,40 €

\*Depending on availability - Dimensions in mm