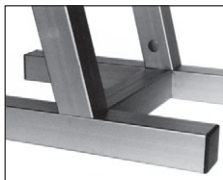
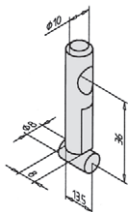


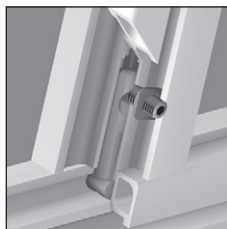
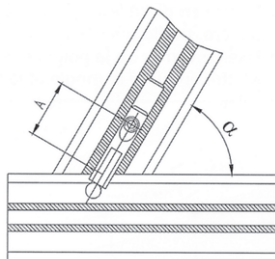
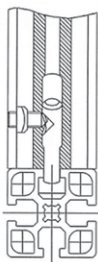
- Creates an angular joint between the end of a profile and the side of a second.
- Fixing kit supplied
- Material: electroplated steel

Assembly

- Drill a $\varnothing 10.2\text{mm}$ in the centre of the side of the horizontal profile
- Drill a $\varnothing 8.2\text{mm}$ at a distance A (see table) from the end of the angled profile
- Insert the angled fastener in the $\varnothing 10.2\text{mm}$ hole
- Position the PRF-ECL-M8 nut in the slot at $\varnothing 8.2$ hole
- Tighten the joint by means of the M8 grub screw



α	25°	30°	35°	40°	45°	50°	55°	60°	65°	70°	75°	80°	85°
A(mm)	21	24	26	28	29	30	30,5	31	31,5	32	32	32	32

**DISCOUNTS**

Qty.	1+	50+	100+
Disc.	List -5%	On request	

Part number	Weight (kg)	Stock*	Price each 1 to 49
PRF-FIX-ANG	0,051	✓	10,92 €

*Depending on availability - Dimensions in mm