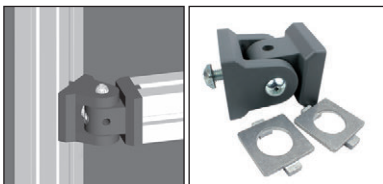


Articulated bracket for use with aluminium profile

PRFART **MiniTec** For loads up to 5000N

- **Cannot be used as a hinge**
- Fixing kit supplied
- Materials:
 - Body/handle: grey powder coated aluminium GD
 - Screw/locking piece: aluminium GD



PRF-ART

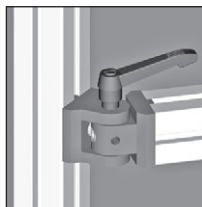
Uses

Simple bracket

- Use for connecting profiles at any angle
- Use reinforcing structures or frames

Bracket with handle

- Allows components to be re-positioned quickly
 - Use for positioning control stations or widgets
- For heavy loads, use multiple profiles/brackets

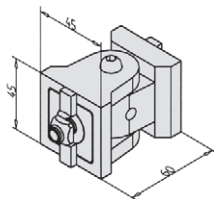
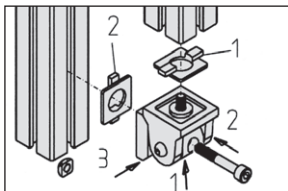


PRF-ART-P

Assembly

- Place the two parts of the bracket in required positions
- Fix using the screws supplied
- Tighten using the handle (PRF-ART-P) or the lateral screw (PRF-ART)

The joint cannot be taken apart once assembled.



DISCOUNTS

Qty.	1+	50+	100+
Disc.	List -5%	On request	

Part number	Max. load (N)	Weight (kg)	Stock*	Price each 1 to 49
Simple bracket				
PRF-ART	5000	0,25	✓	31,08 €
Bracket with handle				
PRF-ART-P	1500	0,28	✓	35,70 €

*Depending on availability - Dimensions in mm