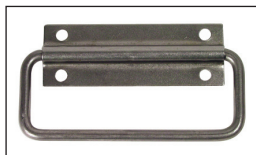
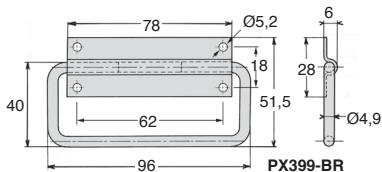


Handle PX399-BR:

- The plate and ring of the handle are not solidly attached
- Plate: 1mm thick formed steel
- Ring: formed wire Ø4.9mm

Handle PO301-ZB:

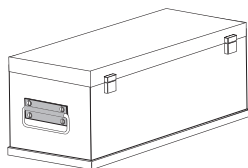
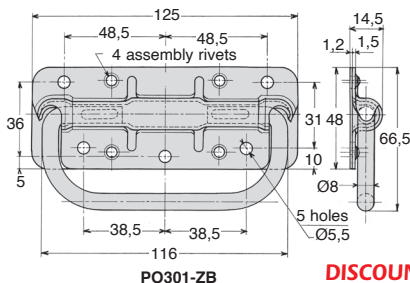
- Reduced height saves space
- Ring is secured to plate
- Pressed plate, 1.5mm
- 5 fixing holes Ø5.5mm
- Ring: steel wire 8mm
- Plate secured using 4 x light alloy rivets Ø3mm



Handle PX399-BR



Handle PO301-ZB



Typical application

DISCOUNTS

Qty	1+	6+	20+	50+	250+	400+
Disc.	List	-5%	-10%	-15%	-25%	On request

Part number	Finish	Fixing	Max. load per handle (kgf)	Weight (kg)	Stock*	Price each 1 to 5
Ordinary carry handle						
PX399-BR	Unfinished	With holes	10	0,049	✓	1,73 €
Riveted carrying handle						
PO301-ZB	White zinc	With holes	60	0,023	✓	9,58 €

*Subject to availability - Dimensions in mm

Maniglia di trasporto a fissaggio frontale



PGMT

Acciaio o inox

Serie economica

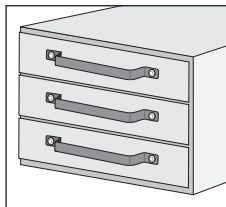
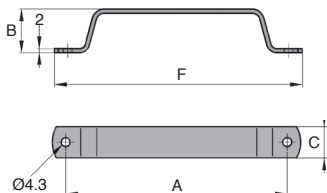
- Maniglia a staffa per spingere e tirare
- Montaggio anteriore
- Materiali:
Acciaio galvanizzato
Inox 304



NUOVO!

Info

- La maniglia in acciaio galvanizzato è prodotta a partire dall'acciaio pregalvanizzato
- Quindi i bordi da taglio e i fori di fissaggio non sono galvanizzati



Esempio d'applicazione

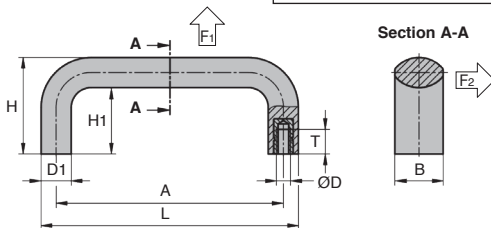
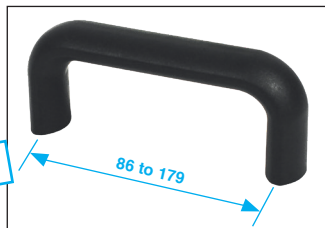
SCONTI PER QUANTITÀ

Qtà	1+	6+	20+	50+
Sc.	Prezzo	-5%	-15%	Su richiesta

Codici	Materiali	Finitura	A	B	C	F	Massa (g)	Stock*	Prezzo unit.
									1 a 5
PGMT107-4/AG	Acciaio galvanizzato	Grezzo	107	21	15	120	32	✓	4,43 €
PGMT107-4/SS	inox 304	Sbavato	107	21	15	120	32	✓	8,79 €

*Nei limiti delle disponibilità - Dimensioni in mm

- Gripping handle for both pushing and pulling
- Rear mounting
- Material:
Black glass-fibre reinforced thermoplastic,
brass threaded insert



DISCOUNTS

Qty	1+	6+	20+	50+
Disc. List	-5%	-15%	On request	

Part number	A	B	ØD	D1	H	H1	L	T	F1 (N)	F2 (N)	Stock*	Price each 1 to 5
PGM86-M5	86	20	M5	12,5	40	28	98,5	10	4000	1500	✓	7,90 €
PGM86-M6	86	20	M6	12,5	40	28	98,5	9	4000	1500	✓	8,30 €
PGM94-M5	94	20	M5	12,5	40	28	106,5	10	3300	1600	✓	8,27 €
PGM94-M6	94	20	M6	12,5	40	28	106,5	9	3300	1600	✓	8,53 €
PGM117-M5	117	25	M5	16,0	50	34	134,0	10	4400	1800	✓	8,80 €
PGM117-M6	117	25	M6	16,0	50	34	134,0	9	4400	1800	-	9,32 €
PGM117-M8	117	25	M8	16,0	50	34	134,0	14	4400	1800	✓	9,57 €
PGM120-M5	120	25	M5	16,0	50	34	134,0	10	5200	2400	-	9,07 €
PGM120-M6	120	25	M6	16,0	50	34	134,0	9	5200	2400	✓	9,57 €
PGM120-M8	120	25	M8	16,0	50	34	134,0	14	5200	2400	✓	9,82 €
PGM132-M5	132	25	M5	16,0	50	34	148,0	10	3700	2600	✓	9,32 €
PGM132-M6	132	25	M6	16,0	50	34	148,0	9	3700	2600	✓	10,07 €
PGM132-M8	132	25	M8	16,0	50	34	148,0	14	3700	2600	✓	10,35 €
PGM150-M6	150	29	M6	18,0	58	40	168,0	15	5900	1900	-	11,03 €
PGM150-M8	150	29	M8	18,0	58	40	168,0	14	5900	1900	✓	11,15 €
PGM150-M10	150	29	M10	18,0	58	40	168,0	14	5900	1900	-	11,89 €
PGM179-M8	179	29	M8	18,0	58	40	197,0	14	3800	3200	✓	12,84 €
PGM179-M10	179	29	M10	18,0	58	40	197,0	14	3800	3200	-	13,19 €

*Depending on availability - Dimensions in mm

- Gripping handle for both pushing and pulling

- Rear mounting

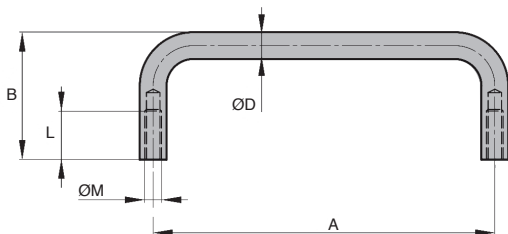
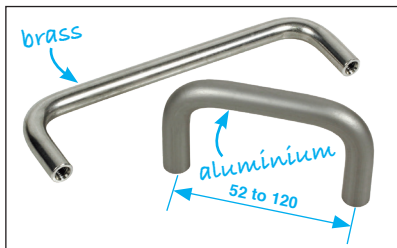
- Materials:

Aluminium, natural finish

Aluminium, polished

Chromed brass

Nickel plated brass



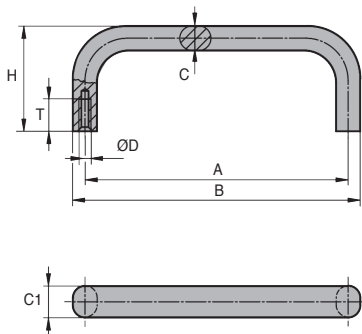
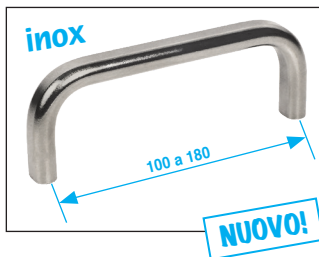
DISCOUNTS

Qty	1+	6+	20+	50+
Disc.	List	-5%	-15%	On request

Part number	Material	Finish	A	B	ØD	L	ØM	Weight (g)	Stock*	Price each
										1 to 5
PGM52-M4/ALA	aluminium anodized, natural		52	34	8	10	M4	14	✓	9,99 €
PGM80-M4/ALA	aluminium anodized, natural		80	34	8	12	M4	17	-	8,42 €
PGM100-M4/ALP	aluminium	polished	100	30	7	8	M4	14	✓	6,01 €
PGM100-M4/ALA	aluminium anodized, natural		100	34	8	12	M4	20	✓	8,89 €
PGM100-M4/BRC	brass	chromed	100	30	7	8	M4	44	✓	8,79 €
PGM100-M4/BRN	brass	nickel plated	100	30	7	8	M4	44	-	10,69 €
PGM120-M4/ALA	aluminium anodized, natural		120	34	8	10	M4	23	✓	9,46 €

*Depending on availability - Dimensions in mm

- Maniglia a staffa per spingere e tirare
- Montaggio posteriore
- Materiale:
Inox 304 lucidato satinato



SCONTI PER QUANTITÀ

Qtà	1+	6+	20+	50+
Sc.	Prezzo	-5%	-15%	Su richiesta

Codici	A	B	C	C1	ØD	H	T	Carico (N)	Stock*	Prezzo unit. 1 a 5
PGM100-M5/SS	100	108	8	12	M5	39	10	1000	✓	18,91 €
PGM120-M5/SS	120	128	8	12	M5	39	10	1000	✓	19,50 €
PGM150-M5/SS	150	160	10	15	M5	39	10	1000	✓	21,09 €
PGM180-M5/SS	180	190	10	15	M5	39	10	1000	✓	22,79 €

*Nei limiti delle disponibilità - Dimensioni in mm

Gripping handle for both pushing and pulling

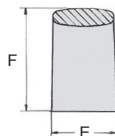
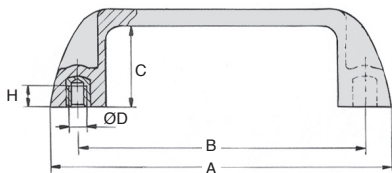
- Rear mounting
- Working T° -30°C to +130°C
- Materials:
Thermoplastic PA6 glass fiber reinforced
Brass inserts with tapped blind hole

Advantages

- Very strong
- 110mm and 120mm centres correspond to German standards
- No product retention



NUOVO!



DISCOUNTS

Qty	1+	6+	20+	50+	100+	250+
Disc.	List	-5%	-10%	-15%	-20%	On request

Part number	B	A	E	F	C	H	ØD	Weight (g)	Stock*	Price each 1 to 5
PCA93-M5	93,5±0,5	111	23	36	29	9	M5	41	✓	5,42 €
PCA93-M6	93,5±0,5	111	23	36	29	9	M6	42	-	5,42 €
PCA105-M5	105±0,5	121	26	37	29	9	M5	46	-	5,78 €
PCA105-M6	105±0,5	121	26	37	29	9	M6	48	-	5,78 €
PCA110-M5	110±0,5	133	26	40	32	9	M5	58	-	6,30 €
PCA110-M6	110±0,5	133	26	40	32	9	M6	60	✓	6,30 €
PCA117-M5	117±1	133	26	40	32	9	M5	57	-	6,52 €
PCA117-M6	117±1	133	26	40	32	9	M6	59	✓	6,52 €
PCA117-M8	117±1	133	26	40	32	9	M8	61	✓	6,52 €
PCA120-M8	120±1	137	26	40	32,5	9	M8	58	-	6,61 €
PCA132-M8	132±1	150	26	45	37	9	M8	68	✓	7,53 €
PCA150-M8	150±1	169	27	45	37	9	M8	76	-	8,42 €
PCA179-M8	179±1	200	28	51	42	9	M8	101	✓	9,61 €
PCA179-M10	179±1	200	28	51	42	13	M10	101	-	9,64 €

*Depending on availability - Dimensions in mm

Gripping handle for both pushing and pulling

- Blind handle, without finger hole
- Fixing with screws (not supplied)
- Working T°: -20°C to +110°C
- Material:
 - Glass fiber reinforced black thermoplastic PP
 - Orange cap RAL2004

NUOVO!

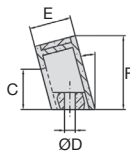
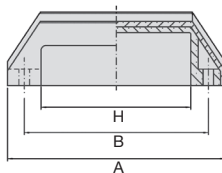


Advantages

- The shape of the handle prevents the complete passage of the fingers and thus protects them from a shearing effect



Prevents pinching



DISCOUNTS

Qty	1+	6+	20+	50+	100+	250+
Disc.	List	-5%	-10%	-15%	-20%	On request

Part number	B	A	E	F	C	H	ØD	Weight (g)	Price each 1 to 5
PSEC110-6	110+/-1	128	25	44	24	85	6,5	62	6,87 €

Dimensions in mm

Recessed handle, clip-in

Stock

PENC

Thermoplastic

- Handle for carrying or push/pull operations, mounting by clipping into a panel

Material:

Black thermoplastic (ABS)

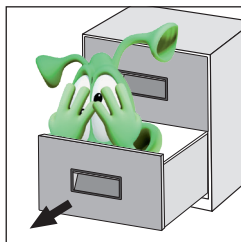
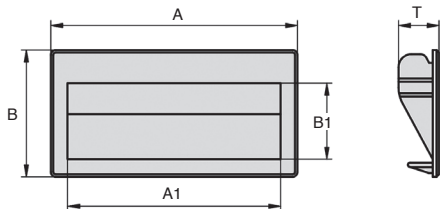
Info.

- Gripping force is 750N per pair in steel and sheet metal housings

Applications

- Ideal for use on metal enclosures or drawers

NUOVO!



Typical application

DISCOUNTS

Qty	1+	6+	20+	50+	100+	250+
Disc.	List	-5%	-10%	-15%	-20%	On request

Part number	A	A1	B	B1	T	Mounting hole	For wall thickness (mm)	Load (N)	Stock*	Price each 1 to 5
PENC40-90	90	79	40,0	30,0	16	83X34	0,75 to 1,5	375	✓	5,81 €
PENC56-110	110	95	56,3	33,8	18	103X49	0,75 to 1,5	375	✓	6,59 €
PENC79-187	187	164	79,0	54,0	22	171X73	1,5 to 2	375	✓	8,57 €

*Depending on availability - Dimensions in mm

HPC
Ct Meca

- Handle for carrying or push/pull operations, mounts by clipping into a panel.

- Material:

Black thermoplastic (ABS)

Info.

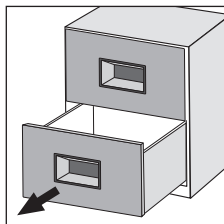
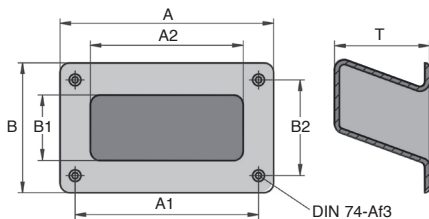
- Maximum load: 500N per pair

Applications

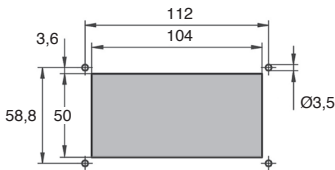
- Ideal for use on metal enclosures or drawers

Improved grip

NUOVO!



Typical application



Mounting holes

DISCOUNTS

Qty	1+	6+	20+	50+	100+	250+
Disc.	List	-5%	-10%	-15%	-20%	On request

Part number	A	A1	A2	B	B1	B2	T	Load (N)	Stock*	Price each 1 to 5
PENV79-131	131	112	94	79,0	40,0	58,8	58	250	✓	7,60 €

*Depending on availability - Dimensions in mm