

Detectable plastic palm grip

New

PDM Thermoplastic identifiable by metal detectors

- **Operating element for sensitive sectors**
- In the event of breakage during production in sensitive sectors such as the food industry, the plastic fragments are easily identified by metal detectors, enabling them to be disposed of quickly
- Material :
 - Detectable thermoplastic (glass-fibre reinforced polyamide), EU10/2011 and FDA compliant (colour RAL7021)
 - Components in polished 316L stainless steel
- Operating temperature: -20°C to +100°C



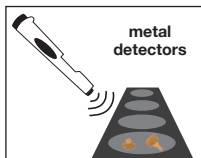
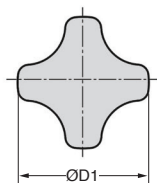
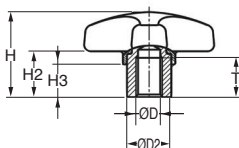
NEW !

Application

- Food industry
- Pharmaceutical industry
- Packaging industry

Info.

- Metal detectable plastic
- Detection volume $\geq 0.027 \text{ cm}^3$
- Food-grade materials



Typical application

DISCOUNTS

Qty	1+	6+	10+	25+
Disc.	List	-5%	-10%	On request

Part Number	ØD	ØD1	ØD2	H	H2	H3	T	Price each
								1 to 5
PDM25-5	M5	25	10,0	18	9	7,0	9	10,88 €
PDM32-6	M6	32	13,5	22	12	9,5	12	13,24 €
PDM40-6	M6	40	13,5	26	14	10,0	12	16,51 €
PDM40-8	M8	40	13,5	26	14	10,0	12	16,51 €
PDM50-8	M8	50	19,0	32	18	12,0	17	22,45 €
PDM50-10	M10	50	19,0	32	18	12,0	17	22,45 €

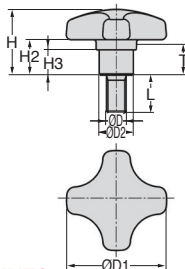
Dimensions in mm

New

Detectable plastic palm grip

Thermoplastic identifiable by metal detectors PDM

- **Operating element for sensitive sectors**
- In the event of breakage during production in sensitive sectors such as the food industry, the plastic fragments are easily identified by metal detectors, enabling them to be disposed of quickly
- Material :
Detectable thermoplastic (glass-fibre reinforced polyamide), EU10/2011 and FDA compliant (colour RAL7021)
- Components in polished 316L stainless steel
- Operating temperature: -20°C to +100°C

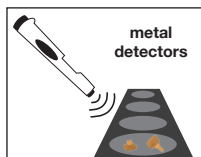
NEW !

Application

- Food industry
- Pharmaceutical industry
- Packaging industry

Info.

- Metal detectable plastic
- Detection volume
≥ 0.027 cm³
- Food-grade materials

**Typical application**

DISCOUNTS

Qty	1+	6+	10+	25+
Disc.	List	-5%	-10%	On request

Part Number	ØD	ØD1	ØD2	H	H2	H3	L	Price each
								1 to 5
PDM25-5-10	M5	25	10	18	9	7	10	11,24 €
PDM25-5-15	M5	25	10	18	9	7	15	11,24 €
PDM25-5-20	M5	25	10	18	9	7	20	11,24 €
PDM32-6-10	M6	32	13,5	22	12	9,5	10	12,27 €
PDM32-6-15	M6	32	13,5	22	12	9,5	15	12,27 €
PDM32-6-20	M6	32	13,5	22	12	9,5	20	12,27 €
PDM32-6-25	M6	32	13,5	22	12	9,5	25	12,94 €
PDM32-6-30	M6	32	13,5	22	12	9,5	30	12,94 €
PDM40-8-15	M8	40	13,5	26	14	10	15	15,39 €
PDM40-8-20	M8	40	13,5	26	14	10	20	15,82 €
PDM40-8-25	M8	40	13,5	26	14	10	25	16,15 €
PDM40-8-30	M8	40	13,5	26	14	10	30	16,45 €
PDM40-8-40	M8	40	13,5	26	14	10	40	17,21 €
PDM40-8-50	M8	40	13,5	26	14	10	50	17,57 €
PDM50-10-20	M10	50	19	32	18	12	20	20,69 €
PDM50-10-25	M10	50	19	32	18	12	25	20,97 €
PDM50-10-30	M10	50	19	32	18	12	30	21,33 €
PDM50-10-40	M10	50	19	32	18	12	40	21,79 €
PDM50-10-50	M10	50	19	32	18	12	50	22,09 €
PDM50-10-60	M10	50	19	32	18	12	60	22,45 €

Dimensions in mm

Detectable plastic palm grip

New

PDV **Visually identifiable** blue thermoplastic

- Ultramarine blue operating element for sensitive sectors
- In the event of breakage during production in sensitive sectors such as the food industry, plastic fragments are easily identified visually, enabling them to be removed quickly
- Materials :
Visually detectable thermoplastic (glass-fibre reinforced polyamide), EU10/2011 and FDA compliant (RAL5002 colour)
Components in polished 316L stainless steel
- Operating temperature: -20°C to +100°C



NEW !

Application

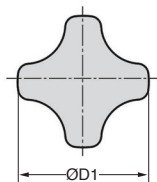
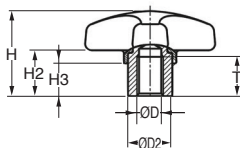
- Food industry
- Pharmaceutical industry
- Packaging industry

Info.

- Food-grade materials



Typical application



DISCOUNTS

Qty	1+	6+	10+	25+
Disc.	List	-5%	-10%	On request

Part Number	ØD	ØD1	ØD2	H	H2	H3	T	Price each
								1 to 5
PDV25-5	M5	25	10	18	9	7	9	10,15 €
PDV32-6	M6	32	13,5	22	12	9,5	12	12,36 €
PDV40-6	M6	40	13,5	26	14	10	12	15,45 €
PDV40-8	M8	40	13,5	26	14	10	12	15,45 €
PDV50-8	M8	50	19	32	18	12	17	20,94 €
PDV50-10	M10	50	19	32	18	12	17	20,94 €

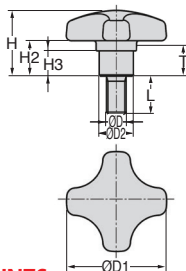
Dimensions in mm

New

Detectable plastic palm grip

Visually identifiable blue thermoplastic **PDV****NEW!**

- Ultramarine blue operating element for sensitive sectors
- In the event of breakage during production in sensitive sectors such as the food industry, plastic fragments are easily identified visually, enabling them to be removed quickly
- Materials :
Visually detectable thermoplastic (glass-fibre reinforced polyamide), EU10/2011 and FDA compliant (RAL5002 colour)
Components in polished 316L stainless steel
- Operating temperature: -20°C to +100°C



Application

- Food industry
- Pharmaceutical industry
- Packaging industry

Info.

- Food-grade materials

**Typical application**

DISCOUNTS

Qty	1+	6+	10+	25+
Disc. List	-5%	-10%	On request	

Part Number	ØD	ØD1	ØD2	H	H2	H3	L	Price each
								1 to 5
PDV25-5-10	M5	25	10,0	18	9	7,0	10	10,51 €
PDV25-5-15	M5	25	10,0	18	9	7,0	15	10,51 €
PDV25-5-20	M5	25	10,0	18	9	7,0	20	10,51 €
PDV32-6-10	M6	32	13,5	22	12	9,5	10	11,42 €
PDV32-6-15	M6	32	13,5	22	12	9,5	15	11,42 €
PDV32-6-20	M6	32	13,5	22	12	9,5	20	11,42 €
PDV32-6-25	M6	32	13,5	22	12	9,5	25	12,06 €
PDV32-6-30	M6	32	13,5	22	12	9,5	30	12,06 €
PDV40-8-15	M8	40	13,5	26	14	10,0	15	14,36 €
PDV40-8-20	M8	40	13,5	26	14	10,0	20	14,76 €
PDV40-8-25	M8	40	13,5	26	14	10,0	25	15,06 €
PDV40-8-30	M8	40	13,5	26	14	10,0	30	15,39 €
PDV40-8-40	M8	40	13,5	26	14	10,0	40	16,03 €
PDV40-8-50	M8	40	13,5	26	14	10,0	50	16,36 €
PDV50-10-20	M10	50	19,0	32	18	12,0	20	19,33 €
PDV50-10-25	M10	50	19,0	32	18	12,0	25	19,54 €
PDV50-10-30	M10	50	19,0	32	18	12,0	30	19,91 €
PDV50-10-40	M10	50	19,0	32	18	12,0	40	20,33 €
PDV50-10-50	M10	50	19,0	32	18	12,0	50	20,60 €
PDV50-10-60	M10	50	19,0	32	18	12,0	60	20,94 €

Dimensions in mm