

Material

- Screw : steel (class 10.9)
- Tip : brass

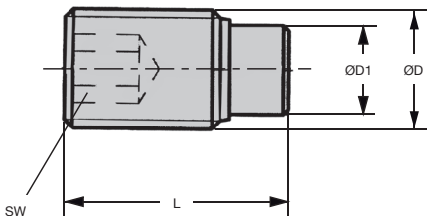
Info.

The tip is fitted into the screw.
 These screws are designed to lock or gently hold screws, axles, shafts or other components with a high quality surface finish.



NEW!

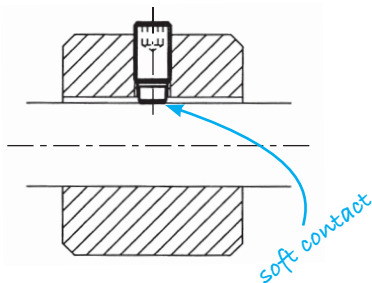
Brass tip



DISCOUNTS

| | | | | | | | |
|-------|------|------|------|------|------|------|------------|
| Qty | 1+ | 20+ | 30+ | 40+ | 60+ | 100+ | 300+ |
| Disc. | Prix | -10% | -15% | -20% | -25% | -45% | On request |

| Part number | ØD | ØD1 | L | SW | Price each. 1 to 19 |
|-------------|----|-----|------|-----|------------------------|
| NTM4-6/BR | M4 | 2,5 | 6,5 | 2 | 5,47 € |
| NTM4-10/BR | M4 | 2,5 | 10,5 | 2 | 5,47 € |
| NTM4-16/BR | M4 | 2,5 | 16,5 | 2 | 5,65 € |
| NTM4-30/BR | M4 | 2,5 | 30,5 | 2 | 7,60 € |
| NTM4-40/BR | M4 | 2,5 | 40,5 | 2 | 7,74 € |
| NTM5-8/BR | M5 | 3 | 8,5 | 2,5 | 4,91 € |
| NTM5-12/BR | M5 | 3 | 12,5 | 2,5 | 4,91 € |
| NTM5-20/BR | M5 | 3 | 20,5 | 2,5 | 5,15 € |
| NTM5-30/BR | M5 | 3 | 30,5 | 2,5 | 7,74 € |
| NTM5-40/BR | M5 | 3 | 40,5 | 2,5 | 7,84 € |



| Part number | ØD | ØD1 | L | SW | Price each. 1 to 19 |
|-------------|-----|-----|------|----|------------------------|
| NTM6-11/BR | M6 | 4,0 | 11,5 | 3 | 4,91 € |
| NTM6-17/BR | M6 | 4,0 | 17,5 | 3 | 4,91 € |
| NTM6-26/BR | M6 | 4,0 | 26,5 | 3 | 5,15 € |
| NTM6-41/BR | M6 | 4,0 | 41,5 | 3 | 7,89 € |
| NTM6-51/BR | M6 | 4,0 | 51,5 | 3 | 8,02 € |
| NTM6-61/BR | M6 | 4,0 | 61,5 | 3 | 8,06 € |
| NTM8-12/BR | M8 | 5,5 | 12,0 | 4 | 5,10 € |
| NTM8-22/BR | M8 | 5,5 | 22,0 | 4 | 5,10 € |
| NTM8-32/BR | M8 | 5,5 | 32,0 | 4 | 5,24 € |
| NTM8-52/BR | M8 | 5,5 | 52,0 | 4 | 8,17 € |
| NTM8-62/BR | M8 | 5,5 | 62,0 | 4 | 8,30 € |
| NTM8-82/BR | M8 | 5,5 | 82,0 | 4 | 8,35 € |
| NTM10-14/BR | M10 | 7,0 | 14,0 | 5 | 5,80 € |
| NTM10-18/BR | M10 | 7,0 | 18,0 | 5 | 5,80 € |
| NTM10-27/BR | M10 | 7,0 | 27,0 | 5 | 5,97 € |
| NTM10-37/BR | M10 | 7,0 | 37,0 | 5 | 6,30 € |
| NTM10-52/BR | M10 | 7,0 | 52,0 | 5 | 8,30 € |
| NTM10-62/BR | M10 | 7,0 | 62,0 | 5 | 8,44 € |
| NTM10-82/BR | M10 | 7,0 | 82,0 | 5 | 8,58 € |
| NTM12-18/BR | M12 | 8,5 | 18,5 | 6 | 6,44 € |
| NTM12-22/BR | M12 | 8,5 | 22,5 | 6 | 6,44 € |
| NTM12-32/BR | M12 | 8,5 | 32,5 | 6 | 6,96 € |
| NTM12-42/BR | M12 | 8,5 | 42,5 | 6 | 7,50 € |
| NTM12-52/BR | M12 | 8,5 | 52,5 | 6 | 8,44 € |
| NTM12-62/BR | M12 | 8,5 | 62,5 | 6 | 8,62 € |
| NTM12-82/BR | M12 | 8,5 | 82,5 | 6 | 8,86 € |