

Spur gear coaxial gearbox



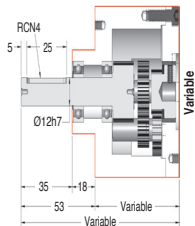
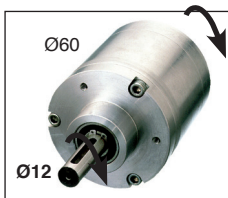
NT62 NH62

Torque up to 18Nm

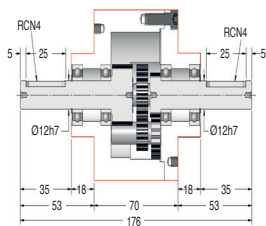
- Ratios from 1:1 to 27:1 (other ratios available on request)
- Output backlash: N/A
- Max. input speed: 3000 rpm
- Materials:
 - casing: anodised aluminium
 - input & output: unhardened steel
- Weight: 0.61 kg

Options

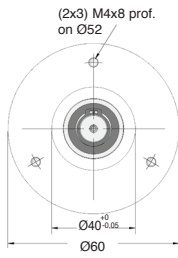
- Can be adapted to suit your motor
- Ask for the ratio you require
- Also see **NT61**, **NH61** and **NT63**, **NH63**
- keyway conforms to DIN 6885



NH62



NT62



Output face

OUTPUT TORQUE (In Nm, values given as a guide only)

Ratios	10:1	12:1	15:1	18:1	20:1	24:1	27:1
3000	6,0	8,0	8,0	8,0	8,0	8,0	8,0
2000	7,0	8,5	8,5	8,5	8,5	8,5	8,5
1000	8,5	9,0	9,0	9,0	9,0	9,0	9,0
INPUT SPEED (rpm)	500	10,0	10,0	10,0	10,0	10,0	10,0
	200	11,0	12,0	12,0	12,0	12,0	12,0
	100	12,0	14,0	14,0	14,0	14,0	14,0
	50	14,0	16,0	16,0	16,0	16,0	16,0
	20	16,0	18,0	18,0	18,0	18,0	18,0

**Large choice of reduction ratios !
Up to 120:1**

DISCOUNTS

Qty.	1+	2+	4+	6+
Disc.	List	-15%	-20%	On request

Part number	Ratios	Max. input speed (rpm)	Max. output speed (rpm)	Efficiency at 1000 rpm	Module	Direction of input/output rotation	Price each
NT62-10	NH62-10	10:1	3000	300	85%	Same	769,20 €
NT62-12	NH62-12	12:1	3000	250	85%	Same	769,20 €
NT62-15	NH62-15	15/1	3000	200	85%	Same	769,20 €
NT62-18	NH62-18	18:1	3000	166	85%	Same	769,20 €
NT62-20	NH62-20	20:1	3000	150	85%	Same	769,20 €
NT62-24	NH62-24	24:1	3000	125	85%	Same	769,20 €
NT62-27	NH62-27	27:1	3000	111	85%	Same	769,20 €
NT62-SP	NH62-SP	1:1 - 27:1	Special ratios from 1:1 to 27:1				877,07 €

On request

Dimensions in mm