

# Multiple junction clamp



## NJM

## For rod or tube

- For extending cylindrical sections, either in-line or parallel mounting

- Materials:

Wing knob: thermosetting plastic

Colour: dark grey

Screw: resistance class 5.8, yellow bichrome steel

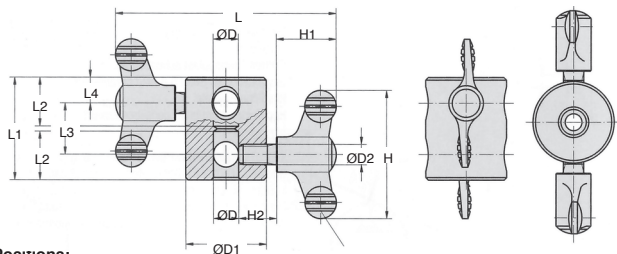
Body: high-resistance anodised aluminium



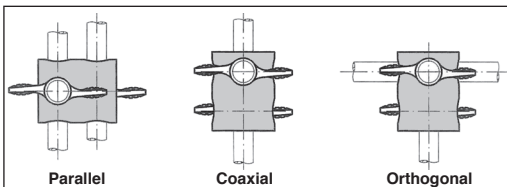
### Advantages

- Parallel mounting arrangement can be used to strengthen a structure

- Additional holes in body allow orthogonal joints to be assembled



Positions:



### DISCOUNTS

Qty.	1+	10+	30+
Disc.		List -5%	On request

Part number	ØD	ØD1	ØD2	L	L1	L2	L3	L4	H	H1	H2	Weight (kg)	Price each
													Stock*
NJM-8	8	28	M8	89	36	17	20	8	50	24	15	0,074	37,80 €
NJM-10	10	32	M8	90	40	19	20	10	50	24	15	0,093	39,57 €
NJM-12	12	36	M8	90	44	21	20	12	50	24	15	0,118	45,25 €
NJM-16	16	45	M10	126	56	27	24	16	75	35	20	0,262	57,68 €

\*Depending on availability - Dimensions in mm