

Double cross clamp



NDS

Crossed or parallel

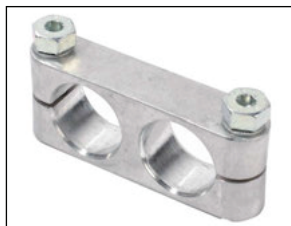
- For $\varnothing 20$ tubes or shafts
- Multiple connection possibilities, either at right angles or for extending length of tubular elements
- Material :
Aluminium with steel screws

Advantages

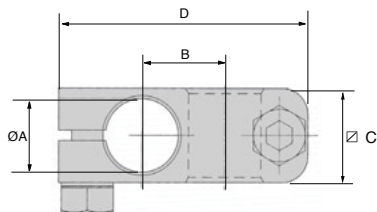
- Clip on, tool free assembly



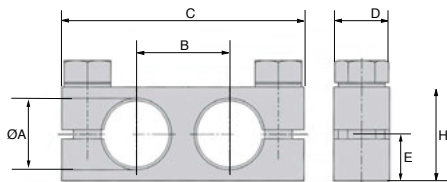
Crossed version



Parallel version



NDS-20/C



NDS-20/P

NEW!

DISCOUNTS

Qty	1+	10+	30+
Disc.	List	-5%	On request

Part number	Type	$\varnothing A$	B	C	D	H	E	Weight (g)	Price each 1 to 9
NDS-20/C	crossed	20	22	24	60	-	-	58	24,97 €
NDS-20/P	parallel	20	26	64	14	25	12,5	60	23,16 €

Dimensions in mm