

# Cylindrical Master-Plate<sup>®</sup> glueable insert

**MSP19**  
**MSP20**

316L stainless steel

- Glueable stainless steel plate with tapped insert or threaded stud
- Material:  
316L stainless steel

## Applications

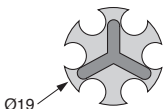
- Industrial, transport, building, furnishings

## Info.

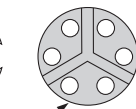
- Glue not supplied
- Not supplied individually, contact us for details



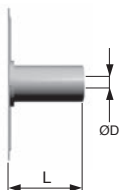
316L stainless steel



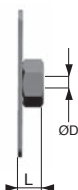
MSP19



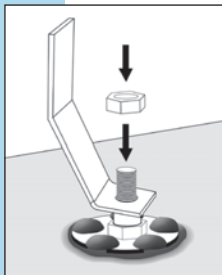
MSP20



Tapped



Nut



Typical application



## DISCOUNTS

Qty	1+	50+	100+	500+
Disc.	List	-10%	-20%	On request

Part number	ØA	ØD	L	Form	Prix Uni. 1 à 49
MSP19TB-5-20/SS	19	M5	20	Blind tapped	7,81 €
MSP19E-4-3/SS	19	M4	3,2	Nut	1,90 €
MSP19E-5-4/SS	19	M5	4	Nut	1,93 €
MSP20E-5-4/SS	20	M5	4	Nut	1,95 €