

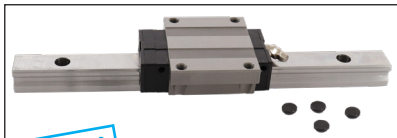
Linear ball slide **Eco range**



GCH15 GCH20

Dynamic load from 12600N to 21800N

- Linear slide unit for heavy loads not subject to vibrations or shocks
- Recirculating ball type linear slide
- Self-lubricated slide units
- Material:
Steel
- Note: part numbers of rails and slide units are separate: remember to order both

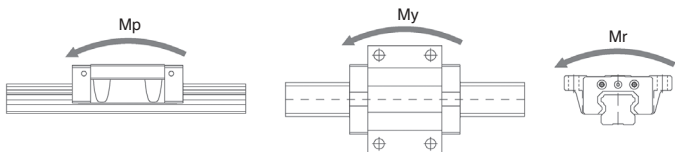
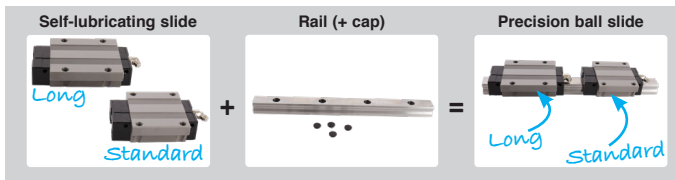


NEW!

Self-lubricating slide + Rail

Application

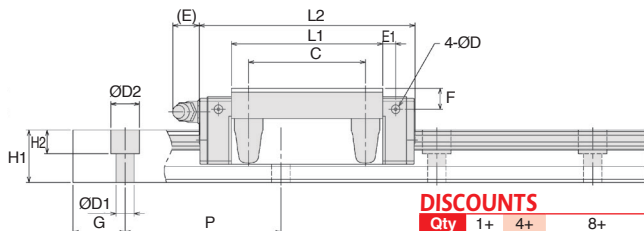
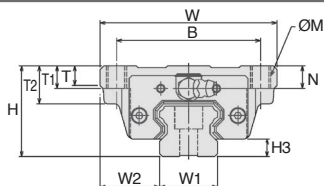
- Machine tool, CNC machine, automation device, industrial robot various industrial machine



| Part number | Type | Basic load rating | | Static allowance moment (kN-m) | | | | Mass | | |
|-------------|----------|-------------------|--------|--------------------------------|-------|-------|------------|-------------|------|-----|
| | | C (N) | Co (N) | Mp | My | Mr | Slide (kg) | Rail (kg/m) | | |
| GCH15-1LF | Standard | 12.6 | 16.2 | 0.115 | 0.552 | 0.115 | 0.552 | 0.129 | 0.19 | 1.3 |
| GCH20-1LF | Standard | 18.3 | 23.9 | 0.221 | 1.049 | 0.221 | 1.049 | 0.251 | 0.41 | 2.2 |
| GCH20G-1LF | Long | 21.8 | 30.7 | 0.370 | 1.692 | 0.370 | 1.692 | 0.322 | 0.54 | 2.2 |

All dimensions in mm

GCH15 GCH20



DISCOUNTS

| | | | |
|-------|------|-----|------------|
| Qty | 1+ | 4+ | 8+ |
| Disc. | List | -6% | On request |

Self-lubricated slide units

| Part number | Type | H | W | L2 | B | C | ØM | L1 | T2 | T | T1 |
|-------------|----------|----|----|------|----|----|----|------|----|-----|----|
| GCH15-1LF | Standard | 24 | 47 | 56.5 | 38 | 30 | M5 | 40.8 | - | 7.0 | 11 |
| GCH20-1LF | Standard | 30 | 63 | 73.2 | 53 | 40 | M6 | 53.1 | - | 9.2 | 10 |
| GCH20G-1LF | Long | 30 | 63 | 89.1 | 53 | 40 | M6 | 69.0 | - | 9.2 | 10 |

| Part number | N | E | F | E1 | D | Grease Nipple | H3 | Price Each 1 to 3 |
|-------------|-----|------|-----|------|-----|---------------|-----|-------------------|
| GCH15-1LF | 6.0 | 4.7 | 3.7 | 3.25 | 3.3 | A-M5 | 4.5 | 46.60 € |
| GCH20-1LF | 7.5 | 10.7 | 6.7 | 4.25 | 3.3 | B-M6F | 6.0 | 55.15 € |
| GCH20G-1LF | 7.5 | 10.7 | 6.7 | 4.25 | 3.3 | B-M6F | 6.0 | 76.10 € |

Rail

| Part number | W1 ±0.05 | Length L | W2 | H1 | G | Pitch P | Ø D1 | Ø D2 | H2 | Mass (kg) | Price Each 1 to 3 |
|-------------|----------|----------|------|------|----|---------|------|------|-----|-----------|-------------------|
| GCH15-180 | 15 | 180 | 16.0 | 13.0 | 20 | 60 | 4.5 | 7.5 | 5.3 | 0.234 | 18.40 € |
| GCH15-360 | 15 | 360 | 16.0 | 13.0 | 20 | 60 | 4.5 | 7.5 | 5.3 | 0.468 | 36.78 € |
| GCH15-480 | 15 | 480 | 16.0 | 13.0 | 20 | 60 | 4.5 | 7.5 | 5.3 | 0.624 | 49.05 € |
| GCH15-660 | 15 | 660 | 16.0 | 13.0 | 20 | 60 | 4.5 | 7.5 | 5.3 | 0.858 | 67.43 € |
| GCH15-900 | 15 | 900 | 16.0 | 13.0 | 20 | 60 | 4.5 | 7.5 | 5.3 | 1.170 | 91.95 € |
| GCH15-1200 | 15 | 1200 | 16.0 | 13.0 | 20 | 60 | 4.5 | 7.5 | 5.3 | 1.560 | 122.60 € |
| GCH15-1500 | 15 | 1500 | 16.0 | 13.0 | 20 | 60 | 4.5 | 7.5 | 5.3 | 1.950 | 153.28 € |
| GCH15-2400 | 15 | 2400 | 16.0 | 13.0 | 20 | 60 | 4.5 | 7.5 | 5.3 | 3.120 | 245.20 € |
| GCH20-240 | 20 | 240 | 21.5 | 16.5 | 20 | 60 | 6.0 | 9.5 | 8.5 | 0.528 | 26.83 € |
| GCH20-480 | 20 | 480 | 21.5 | 16.5 | 20 | 60 | 6.0 | 9.5 | 8.5 | 1.056 | 53.65 € |
| GCH20-660 | 20 | 660 | 21.5 | 16.5 | 20 | 60 | 6.0 | 9.5 | 8.5 | 1.452 | 73.78 € |
| GCH20-840 | 20 | 840 | 21.5 | 16.5 | 20 | 60 | 6.0 | 9.5 | 8.5 | 1.848 | 93.90 € |
| GCH20-1020 | 20 | 1020 | 21.5 | 16.5 | 20 | 60 | 6.0 | 9.5 | 8.5 | 2.244 | 114.00 € |
| GCH20-1200 | 20 | 1200 | 21.5 | 16.5 | 20 | 60 | 6.0 | 9.5 | 8.5 | 2.640 | 134.13 € |
| GCH20-1500 | 20 | 1500 | 21.5 | 16.5 | 20 | 60 | 6.0 | 9.5 | 8.5 | 3.300 | 167.68 € |
| GCH20-1980 | 20 | 1980 | 21.5 | 16.5 | 20 | 60 | 6.0 | 9.5 | 8.5 | 4.356 | 221.33 € |

All dimensions in mm

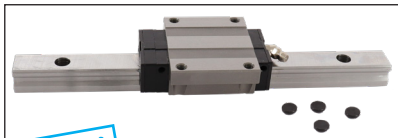
Linear ball slide **Eco range**



GCH25 GCH30

Dynamic load from 27000N to 60300N

- Linear slide unit for heavy loads not subject to vibrations or shocks
- Recirculating ball type linear slide
- Self-lubricated slide units
- Material:
Steel
- Note: part numbers of rails and slide units are separate: remember to order both

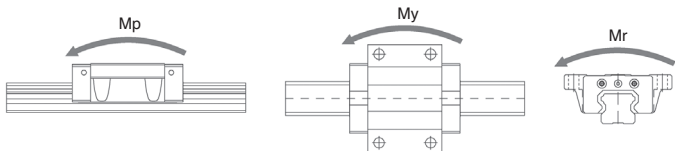
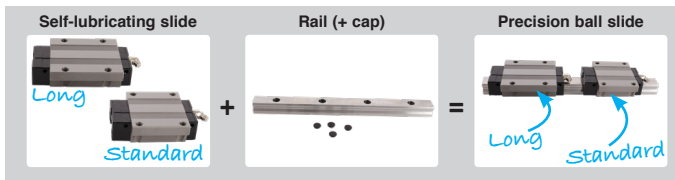


NEW!

Self-lubricating slide + Rail

Application

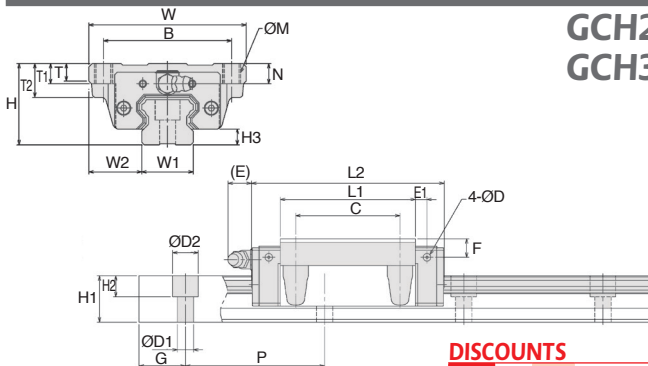
- Machine tool, CNC machine, automation device, industrial robot various industrial machine



| Part number | Type | Basic load rating | | Static allowance moment (kN-m) | | | | Mass | | |
|-------------|----------|-------------------|--------|--------------------------------|-------|-------|------------|-------------|------|------|
| | | C (N) | Co (N) | Mp | My | Mr | Slide (kg) | Rail (kg/m) | | |
| GCH25-1LF | Standard | 27,0 | 33,1 | 0,337 | 1,636 | 0,337 | 1,636 | 0,398 | 0,61 | 3,0 |
| GCH25G-1LF | Long | 32,8 | 43,6 | 0,596 | 2,760 | 0,596 | 2,760 | 0,525 | 0,82 | 3,0 |
| GCH30-1LF | Standard | 50,4 | 57,1 | 0,711 | 3,384 | 0,711 | 3,384 | 0,828 | 1,1 | 4,85 |
| GCH30G-1LF | Long | 60,3 | 73,6 | 1,203 | 5,506 | 1,203 | 5,506 | 1,067 | 1,3 | 4,85 |

All dimensions in mm

GCH25 GCH30



DISCOUNTS

| | | | |
|-------|------|-----|------------|
| Qty | 1+ | 4+ | 8+ |
| Disc. | List | -6% | On request |

Self-lubricated slide units

| Part number | Type | H | W | L2 | B | C | ØM | L1 | T2 | T | T1 |
|-------------|----------|----|----|-------|----|----|-----|------|----|------|----|
| GCH25-1LF | Standard | 36 | 70 | 83,2 | 57 | 45 | M8 | 58,3 | - | 11,5 | 16 |
| GCH25G-1LF | Long | 36 | 70 | 103,1 | 57 | 45 | M8 | 78,2 | - | 11,5 | 16 |
| GCH30-1LF | Standard | 42 | 90 | 99,3 | 72 | 52 | M10 | 70,8 | - | 9,5 | 18 |
| GCH30G-1LF | Long | 42 | 90 | 121,5 | 72 | 52 | M10 | 93,0 | - | 9,5 | 18 |

| Part number | N | E | F | E1 | D | Grease Nipple | H3 | Price Each 1 to 3 |
|-------------|-----|------|---|-----|-----|---------------|-----|-------------------|
| GCH25-1LF | 9,0 | 10,2 | 8 | 5,0 | 3,3 | B-M6F | 7,0 | 70,08 € |
| GCH25G-1LF | 9,0 | 10,2 | 8 | 5,0 | 3,3 | B-M6F | 7,0 | 97,63 € |
| GCH30-1LF | 7,3 | 9,8 | 5 | 5,8 | 5,2 | B-M6F | 7,5 | 83,00 € |
| GCH30G-1LF | 7,3 | 9,8 | 5 | 5,8 | 5,2 | B-M6F | 7,5 | 104,75 € |

Rail

| Part number | W1 ±0.05 | Length L | W2 | H1 | G | Pitch P | Ø D1 | Ø D2 | H2 | Mass (kg) | Price Each 1 to 3 |
|-------------|----------|----------|------|------|----|---------|------|------|----|-----------|-------------------|
| GCH25-240 | 23 | 240 | 23,5 | 20,0 | 20 | 60 | 7 | 11 | 9 | 0,720 | 29,88 € |
| GCH25-480 | 23 | 480 | 23,5 | 20,0 | 20 | 60 | 7 | 11 | 9 | 1,440 | 59,75 € |
| GCH25-660 | 23 | 660 | 23,5 | 20,0 | 20 | 60 | 7 | 11 | 9 | 1,980 | 82,18 € |
| GCH25-840 | 23 | 840 | 23,5 | 20,0 | 20 | 60 | 7 | 11 | 9 | 2,520 | 104,58 € |
| GCH25-1020 | 23 | 1020 | 23,5 | 20,0 | 20 | 60 | 7 | 11 | 9 | 3,060 | 127,00 € |
| GCH25-1200 | 23 | 1200 | 23,5 | 20,0 | 20 | 60 | 7 | 11 | 9 | 3,600 | 149,40 € |
| GCH25-1500 | 23 | 1500 | 23,5 | 20,0 | 20 | 60 | 7 | 11 | 9 | 4,500 | 186,75 € |
| GCH25-1980 | 23 | 1980 | 23,5 | 20,0 | 20 | 60 | 7 | 11 | 9 | 5,940 | 246,50 € |
| GCH25-3000 | 23 | 3000 | 23,5 | 20,0 | 20 | 60 | 7 | 11 | 9 | 9,000 | 373,50 € |
| GCH30-480 | 28 | 480 | 31,0 | 26,0 | 20 | 80 | 9 | 14 | 12 | 2,328 | 69,15 € |
| GCH30-640 | 28 | 640 | 31,0 | 26,0 | 20 | 80 | 9 | 14 | 12 | 3,104 | 92,20 € |
| GCH30-800 | 28 | 800 | 31,0 | 26,0 | 20 | 80 | 9 | 14 | 12 | 3,880 | 115,25 € |
| GCH30-1040 | 28 | 1040 | 31,0 | 26,0 | 20 | 80 | 9 | 14 | 12 | 5,044 | 149,80 € |
| GCH30-1200 | 28 | 1200 | 31,0 | 26,0 | 20 | 80 | 9 | 14 | 12 | 5,820 | 172,85 € |
| GCH30-1520 | 28 | 1520 | 31,0 | 26,0 | 20 | 80 | 9 | 14 | 12 | 7,372 | 218,95 € |
| GCH30-2000 | 28 | 2000 | 31,0 | 26,0 | 20 | 80 | 9 | 14 | 12 | 9,700 | 288,10 € |
| GCH30-2960 | 28 | 2960 | 31,0 | 26,0 | 20 | 80 | 9 | 14 | 12 | 14,356 | 426,40 € |

All dimensions in mm

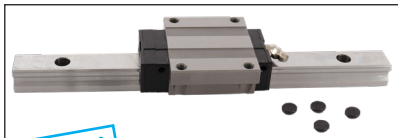
Linear ball slide **Eco range**



GCH35 GCH45

Dynamic load from
67000N to 129700N

- Linear slide unit for heavy loads not subject to vibrations or shocks
- Recirculating ball type linear slide
- Self-lubricated slide units
- Material:
Steel
- Note: part numbers of rails and slide units are separate: remember to order both

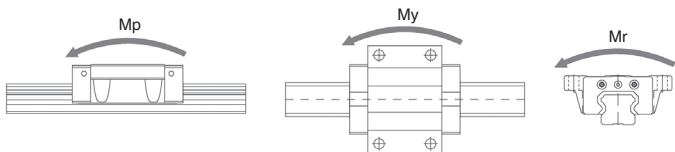
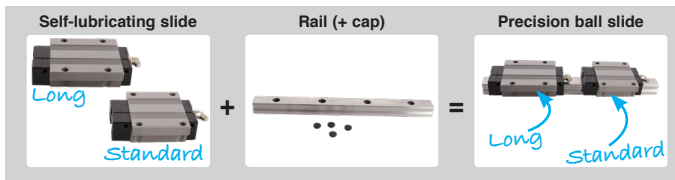


NEW!

Self-lubricating slide + Rail

Application

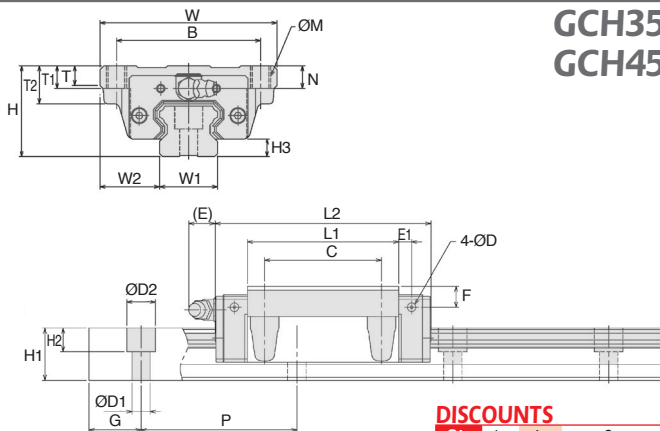
- Machine tool, CNC machine, automation device, industrial robot various industrial machine



| Part number | Type | Basic load rating | | Static allowance moment (kN-m) | | | | Mass | | |
|-------------|----------|-------------------|--------|--------------------------------|--------|-------|------------|-------------|------|-------|
| | | C (N) | Co (N) | Mp | My | Mr | Slide (kg) | Rail (kg/m) | | |
| GCH35-1LF | Standard | 67,0 | 74,6 | 1,062 | 5,012 | 1,062 | 5,012 | 1,298 | 1,60 | 6,58 |
| GCH35G-1LF | Long | 80,2 | 96,2 | 1,797 | 8,172 | 1,797 | 8,172 | 1,674 | 2,01 | 6,58 |
| GCH45-1LF | Standard | 108,5 | 116,4 | 2,860 | 9,912 | 2,860 | 9,912 | 2,275 | 2,83 | 11,03 |
| GCH45G-1LF | Long | 129,7 | 150,1 | 4,533 | 16,161 | 4,533 | 16,161 | 2,935 | 3,70 | 11,03 |

All dimensions in mm

GCH35 GCH45



DISCOUNTS

| | | | |
|-------|------|-----|------------|
| Qty | 1+ | 4+ | 8+ |
| Disc. | List | -6% | On request |

Self-lubricated slide units

| Part number | Type | H | W | L2 | B | C | ØM | L1 | T2 | T | T1 |
|-------------|----------|----|-----|-------|-----|----|-----|-------|----|------|----|
| GCH35-1LF | Standard | 48 | 100 | 111,8 | 82 | 62 | M10 | 80,8 | - | 12,5 | 21 |
| GCH35G-1LF | Long | 48 | 100 | 137,2 | 82 | 62 | M10 | 106,2 | - | 12,5 | 21 |
| GCH45-1LF | Standard | 60 | 120 | 139,0 | 100 | 80 | M12 | 101,9 | 25 | 13,0 | 15 |
| GCH45G-1LF | Long | 60 | 120 | 170,8 | 100 | 80 | M12 | 133,7 | 25 | 13,0 | 15 |

| Part number | N | E | F | E1 | D | Grease Nipple | H3 | Price Each 1 to 3 |
|-------------|----|------|-----|-----|-----|---------------|----|-------------------|
| GCH35-1LF | 8 | 9,7 | 6,5 | 6,5 | 5,2 | B-M6F | 9 | 113,55 € |
| GCH35G-1LF | 8 | 9,7 | 6,5 | 6,5 | 5,2 | B-M6F | 9 | 157,43 € |
| GCH45-1LF | 10 | 16,0 | 8,0 | 8,0 | 3,3 | B-PT1/8 | 10 | 143,53 € |
| GCH45G-1LF | 10 | 16,0 | 8,0 | 8,0 | 3,3 | B-PT1/8 | 10 | 179,28 € |

Rail

| Part number | W1 ±0.05 | Length L | W2 | H1 | Pitch G | Ø P | Ø D1 | Ø D2 | H2 | Mass (kg) | Price Each 1 to 3 |
|-------------|----------|----------|------|----|---------|-----|------|------|----|-----------|-------------------|
| GCH35-480 | 34 | 480 | 33,0 | 29 | 20,0 | 80 | 9 | 14 | 12 | 3,158 | 89,35 € |
| GCH35-640 | 34 | 640 | 33,0 | 29 | 20,0 | 80 | 9 | 14 | 12 | 4,211 | 119,13 € |
| GCH35-800 | 34 | 800 | 33,0 | 29 | 20,0 | 80 | 9 | 14 | 12 | 5,264 | 148,93 € |
| GCH35-1040 | 34 | 1040 | 33,0 | 29 | 20,0 | 80 | 9 | 14 | 12 | 6,843 | 193,60 € |
| GCH35-1200 | 34 | 1200 | 33,0 | 29 | 20,0 | 80 | 9 | 14 | 12 | 7,896 | 223,38 € |
| GCH35-1520 | 34 | 1520 | 33,0 | 29 | 20,0 | 80 | 9 | 14 | 12 | 10,002 | 282,95 € |
| GCH35-2960 | 34 | 2960 | 33,0 | 29 | 20,0 | 80 | 9 | 14 | 12 | 19,477 | 551,00 € |
| GCH45-840 | 45 | 840 | 37,5 | 38 | 22,5 | 105 | 14 | 20 | 17 | 9,265 | 225,33 € |
| GCH45-1050 | 45 | 1050 | 37,5 | 38 | 22,5 | 105 | 14 | 20 | 17 | 11,582 | 281,68 € |
| GCH45-1260 | 45 | 1260 | 37,5 | 38 | 22,5 | 105 | 14 | 20 | 17 | 13,898 | 338,00 € |
| GCH45-1470 | 45 | 1470 | 37,5 | 38 | 22,5 | 105 | 14 | 20 | 17 | 16,214 | 394,33 € |
| GCH45-1995 | 45 | 1995 | 37,5 | 38 | 22,5 | 105 | 14 | 20 | 17 | 22,005 | 535,15 € |
| GCH45-2940 | 45 | 2940 | 37,5 | 38 | 22,5 | 105 | 14 | 20 | 17 | 32,428 | 788,65 € |

All dimensions in mm