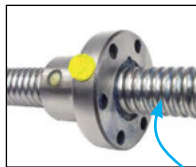
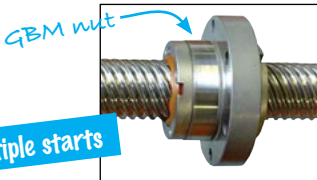


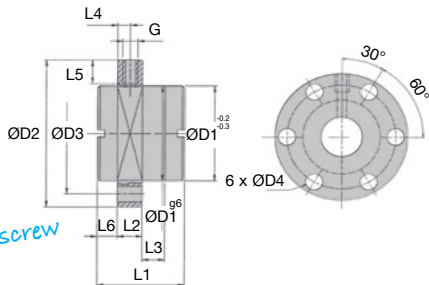
- Nut for ballscrew
- Multiple starts
- Axial backlash: 0.2mm
- Material:
16 MnCr5 or 100Cr6

Accessories

- See **KGS** ballscrew (the pitch and the diameter must be identical to those of the nut)



KGS ballscrew



DISCOUNTS

Qty	1+	2+	6+	11+
Disc.	List	-7%	-13%	On request

Part number	ØD1g6	ØD2h13	ØD3	ØD4	L1	L2	L3	L4	L5	L6	L7	G
GBM-F-2020-RH	35	62	50	7	30	10	4	5	8	8	-	M6
GBM-F-2050-RH	35	62	50	7	56	10	30	5	8	8	-	M6
GBM-F-3220-RH	53	80	68	7	55	16	19	8	10	10	-	M6
GBM-F-3240-RH	53	80	68	7	50	16	14	8	10	10	-	M6
GBM-F-5020-RH	85	125	103	11	80	18	38,75	9	10	5	95	M8x1

Part number	For ballscrew Ø	Movement per rev (mm)	Load		Weight (kg)	Price each
			dynamic C (kN)	static Co (kN)		
GBM-F-2020-RH	20	20	9,00	19,10	0,25	530,35 €
GBM-F-2050-RH	20	50	7,90	19,00	0,40	633,98 €
GBM-F-3220-RH	32	20	19,50	65,00	0,50	670,79 €
GBM-F-3240-RH	32	40	11,50	33,50	0,50	679,67 €
GBM-F-5020-RH	50	20	61,70	178,40	2,00	1 112,28 €

Dimensions in mm