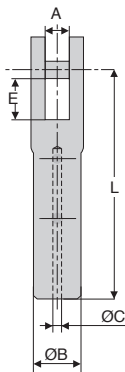


- Cable terminal to be screwed
- Material :
Stainless steel 316

Accessories

- CAB cable
(tome 1 p.418)



DISCOUNTS

Qty	1+	4+	10+	15+
Disc. List	-10%	-20%	On request	

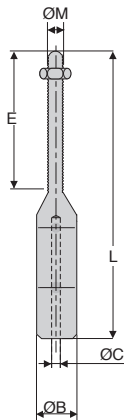
Part number	For cable					Weight (g)	Price each 1 to 3
	ØC	A	ØB	C	L		
EVC2-37/SS	2	4,5	8	7	37	16,5	
EVC3-50/SS	3	5,5	10	8	50	30,0	
EVC4-52/SS	4	6,5	12	8	52	46,0	

Dimensions in mm

- Cable terminal to be screwed
- Thread ISO pitch right hand
- Delivered with a nut
- Material :
Stainless steel 316

Accessories

- CAB cable
(tome 1 p.418)



DISCOUNTS

Qty	1+	4+	10+	15+
Disc.	List	-10%	-20%	On request

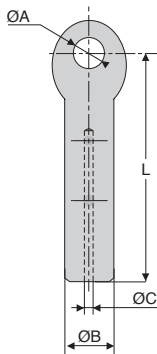
Part number	For cable			E	L	Weight (g)	Price each 1 to 3
	ØC	ØM	ØB				
EVF2-50-M4/SS	2	M4	8	20	50	11,0	
EVF3-56-M4/SS	3	M4	10	20	56	19,0	
EVF4-80-M5/SS	4	M5	12	40	80	51,5	

Dimensions in mm

- Cable terminal to be screwed
- Material :
Stainless steel 316

Accessories

- CAB cable
(tome 1 p.418)



DISCOUNTS

Qty	1+	4+	10+	15+
Disc. List	-10%	-20%	On request	

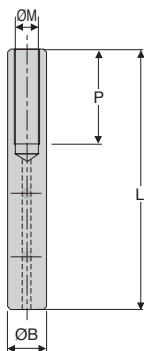
Part number	For cable			L	Weight (g)	Price each 1 to 3
	ØC	ØA	ØB			
EVY2-37/SS	2	4,5	8	37	13	
EVY3-50/SS	3	5,5	10	50	27	
EVY4-52/SS	4	6,5	12	52	41	

Dimensions in mm

- Cable terminal to be screwed
- Thread ISO pitch right hand
- Delivered with a nut
- Material :
Stainless steel 316

Accessories

- CAB cable
(tome 1 p.418)



DISCOUNTS

Qty	1+	4+	10+	15+
Disc.	List	-10%	-20%	On request

Part number	For cable			P	L	Weight (g)	Price each 1 to 3
	ØC	ØM	ØB				
EVT2-55-M5/SS	2	M5	8	20	55	16,0	
EVT3-65-M5/SS	3	M5	10	25	65	33,0	
EVT4-70-M6/SS	4	M6	12	25	70	51,5	

Dimensions in mm