



# Motor-gearbox 12V and 24V DC

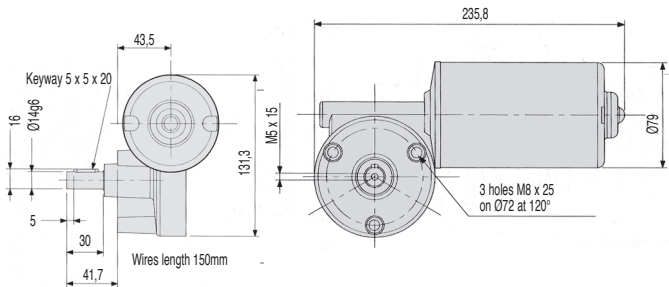
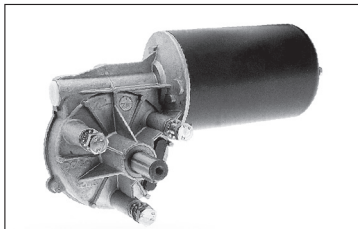
## Torque from 12Nm to 15Nm

## DOG258

- Gearbox type: worm
- Bearings: self-lubricating bushes
- Angular backlash: N/A
- Max. axial load: N/A
- Max. radial load: N/A
- Working temp.: -40°C to +80°C
- Weight: 3kg
- Ingress protection: IP53

### Accessories

- Speed controller not available
- Servo amplifier **FIRSTDC -1Q-60/10**
- Power Supplies **ALIDR120-14,ALIDRP240-24**
- **HPC is unable to supply a speed controller for this motor gearbox**
- **The encoder cannot be mounted behind the motor.**



### DISCOUNTS

Qty.	1+	6+	10+
Disc.	List	-7%	On request

Part number	Ratios	Unloaded speed (rpm)	Loaded speed (rpm)	Nominal torque (Nm)	Nominal current (mA)	Price each 1 to 5
<b>12 V DC Version</b>						
DOG258-12-50	52:1	50	40	12	12	403,65 €
DOG258-12-30	52:1	30	25	15	10	403,65 €
<b>24 V DC Version</b>						
DOG258-24-50	52:1	50	40	12	6	403,65 €
DOG258-24-30	52:1	30	25	15	5	403,65 €

Dimensions in mm