

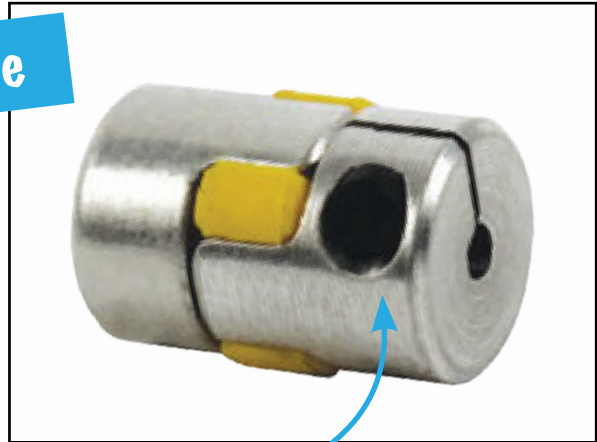


DKGS

Servo insert coupling Torque range: 0.5 to 3 Nm

- **Elastic backlash free coupling**
- Reliable torque transmission
- Maintenance free
- Low inertia/size
- Easy to assemble, even in confined spaces
- Reduces vibration
- Materials:
 - Hub: Aluminium
 - Spider: Polyurethane 92 Shore A (Yellow)

Small size



Secured by a clamping hub

Applications

- Metrology, control systems, driving, machine tools, driving lead screws

Torque (Nm) transmissible by friction for a split hub

Bore size	Ø2	Ø3	Ø4	Ø5	Ø6	Ø7	Ø8	Ø9	Ø10	Ø11
DKGS-5	0,5	0,5	0,5	-	-	-	-	-	-	-
DKGS-7	-	0,8	1,1	1,2	1,2	1,2	-	-	-	-
DKGS-9	-	1,5	2	2,5	2,9	3	3	3	3	3

Part number	Nominal torque (Nm)	Tightened torque (Nm)	Max speed (rpm)	Moment of inertia (10 ⁻⁶ kg.m ²)	Misalignment axial (Nm)	Misalignment radial (Nm)	Misalignment angular
DKGS-5	0,5	0,25	38000	0,034	-0,2/+0,4	0,06	1°
DKGS-7	1,2	0,35	27000	0,196	-0,3/+0,6	0,10	1°
DKGS-9	3	0,75	19000	1,08	-0,4/+0,8	0,13	1°

Dimensions in mm

Characteristics

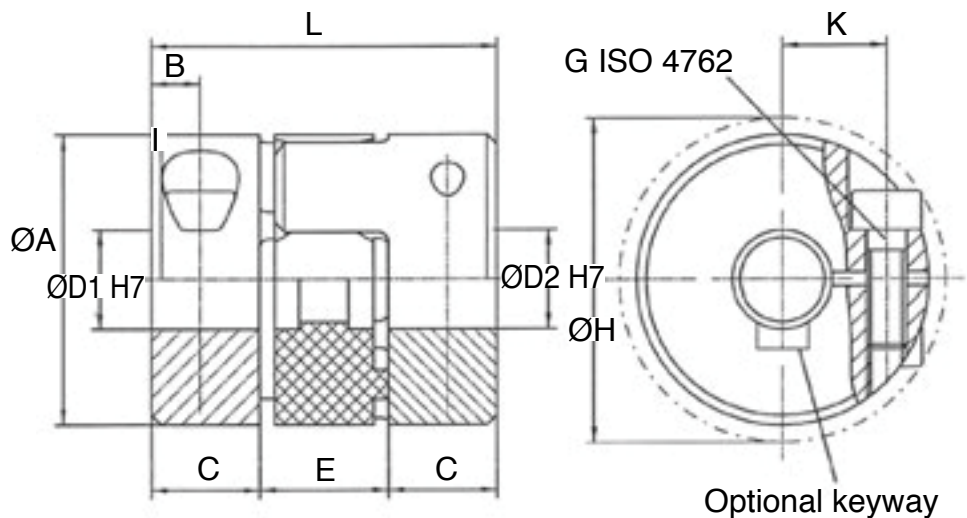
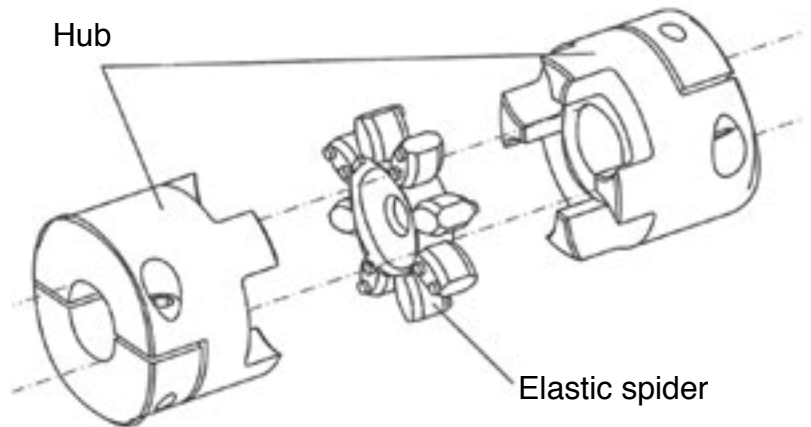
- Hardwearing
- Secured by a clamping hub
- Couplings are mounted pre-tensioned
- Shaft tolerance should be g6 or h7
- Contact surfaces should be grease free

Bore

- Choose ØD1 and ØD2 from the ranges shown

Option

- Keyway according to DIN6885-1



DISCOUNTS

Qty	1+	5+	10+	25+
Disc.	List	-4%	-8%	On request

Part number	L	ØA	K	ØH	E	ØD1/ØD2		C	B	G	Weight (g)	Price each 1 to 4	
						No keyway	with keyway					No keyway	with keyway
DKGS-5	15	10	3,2	11,5	5	2-4	-	5	2,5	M1,6	5	40,89 €	-
DKGS-7	22	14	5	16,5	8	3-7	6-7	7	3,5	M2	9	42,33 €	68,63 €
DKGS-9	30	20	7,3	23,5	10	3-11	6-11	10	5	M2,5	15	43,80 €	70,10 €

Dimensions in mm