

Forcella e perno serie corta

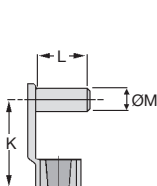
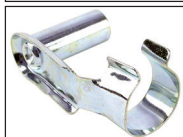
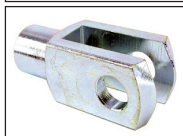


CLS CLP

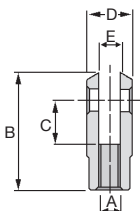
Acciaio

Assemblaggio rapido

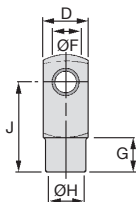
- Forcella d'assemblaggio
- Acciaio semiduro 9S Mn Pb28
R=500N/mm²
- A norma DIN 71752
- Venduto a multipli, contattateci



CLP Forcella



CLS perno



SCONTI PER QUANTITÀ

Qtà	1+	6+	20+	50+	100+	250+
Sc.	Prezzo	-10%	-20%	-30%	-40%	Su richiesta

Forcella

Codice	A	B	C	D	E (B13)	ØF (H9)	G	ØH	J	Carico statico		Prezzo unit. da 1 a 5
										Co (daN)	Stock*	
CLS-4	M4 x 0,70	21	8	8	4	4	6,00	8	16	320	✓	2,25 €
CLS-5	M5 x 0,80	26	10	10	5	5	7,50	9	20	500	✓	1,75 €
CLS-6	M6 x 1,00	31	12	12	6	6	9,00	10	24	720	✓	1,56 €
CLS-8	M8 x 1,25	42	16	16	8	8	12,00	14	32	1280	✓	1,96 €
CLS-10	M10 x 1,50	52	20	20	10	10	15,00	18	40	2000	✓	2,84 €
CLS-12	M12 x 1,75	62	24	24	12	12	18,00	20	48	2880	✓	5,32 €
CLS-16	M16 x 2,00	83	32	32	16	16	24,00	26	64	5120	✓	10,94 €
CLS-10C	M10 x 1,25	52	20	20	10	10	15,00	18	40	-	✓	3,01 €
CLS-12C	M12 x 1,25	62	24	24	12	12	18,00	20	48	-	✓	5,32 €
CLS-16C	M16 x 1,50	83	32	32	16	16	24,00	26	64	-	✓	11,01 €

Perno a molla

Codice	K	L	ØM	Stock*	Prezzo Unit. da 1 a 5
CLP-4	15	9	4	✓	0,69 €
CLP-5	19	12	5	✓	0,76 €
CLP-6	23	14	6	✓	0,76 €
CLP-8	31	19	8	✓	0,69 €
CLP-10	39	23	10	✓	0,82 €
CLP-12	47	28	12	✓	1,37 €
CLP-16	62	36	16	✓	2,39 €

*Nei limiti delle disponibilità - Dimensioni in mm