

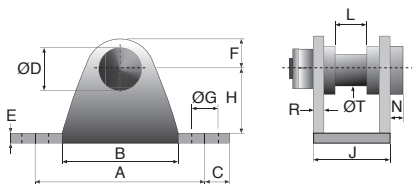
For use with a male clevis

CLR
CLRss

- For fixing a gas spring
- Materials:
 - Steel
 - 316L stainless steel

Advantages

- Allows gas springs to be mounted using a mounting plate and a CLM male clevis

**NEW!****DISCOUNTS**

Qty	1+	6+	10+	15+	20+
Disc.	List	-10%	-15%	-20%	On request

Part number	A	B	C	E	F	ØG	H	J	ØD	ØT	N	L	R	Max load (N)	Price each 1 to 5
Steel															
CLR-6	51	36	9,5	2,5	9	6,5	20	18	13	6	4,0	6,5	2,5	500	15,46 €
CLR-8	51	36	9,5	2,5	9	6,5	20	18	13	8	4,0	13	2,5	1800	15,46 €
Stainless steel															
CLR-6/SS	51	36	9,5	2,5	9	6,5	20	18	13	6	4,0	6,5	2,5	500	110,64 €
CLR-8/SS	51	36	9,5	2,5	9	6,5	20	18	13	8	4,0	13	2,5	1800	101,71 €

Dimensions in mm