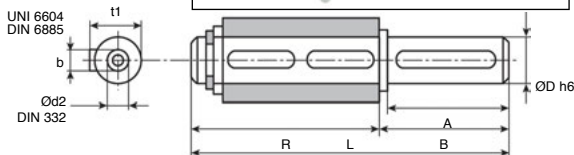
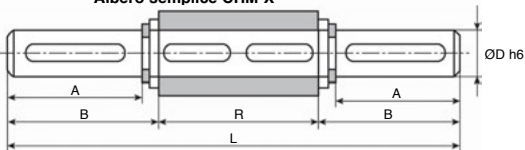
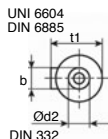


- Si monta negli alesaggi dei riduttori CHM e CHMR
- Albero in acciaio



Albero semplice CHM-X



Albero doppio CHM-DX

SCONTI PER QUANTITÀ ^A

Qtà	1+	6+	20+	40+
Sc.	Prezzo	-15%	-20%	Su richiesta

SCONTI PER QUANTITÀ ^B

Qtà	1+	2+	6+	15+
Sc.	Prezzo	-5%	-15%	Su richiesta

Codice	ØD h6	A	B	b	t1	R	L	Ød2	Massa (kg)	Stock*	Prezzo unit. da 1 a 5
Albero semplice											
CHM30-X	14	30	32,5	5	16,0	69,5	102	M6x16	0,14	✓	^A 14,37 €
CHM40-X	18	40	43,0	6	20,5	85,0	128	M6x16	0,27	✓	^A 16,94 €
CHM50-X	25	50	53,5	8	28,0	99,5	153	M10x22	0,60	✓	^A 19,49 €
CHM63-X	25	50	53,5	8	28,0	119,5	173	M10x22	0,67	✓	^A 21,69 €
CHM75-X	28	60	63,5	8	31,0	128,5	192	M10x22	0,94	✓	^A 24,22 €
CHM90-X	35	80	84,5	10	38,0	149,5	234	M12x28	1,79	✓	^B 36,07 €
CHM110-X	42	80	84,5	12	45,0	164,5	249	M16x35	2,70	-	^B 40,82 €
Albero doppio											
CHM30-DX	14	30	32,5	5	16,0	63,0	128	M6x16	0,16	✓	^A 19,49 €
CHM40-DX	18	40	43,0	6	20,5	78,0	164	M6x16	0,34	✓	^A 21,69 €
CHM50-DX	25	50	53,5	8	28,0	92,0	199	M10x22	0,75	✓	^A 24,22 €
CHM63-DX	25	50	53,5	8	28,0	112,0	219	M10x22	0,84	-	^A 26,42 €
CHM75-DX	28	60	63,5	8	31,0	120,0	247	M10x22	1,20	✓	^B 28,77 €
CHM90-DX	35	80	84,5	10	38,0	140,0	309	M12x28	2,50	-	^B 42,48 €
CHM110-DX	42	80	84,5	12	45,0	155,0	324	M16x35	3,44	-	^B 50,52 €

*Nei limiti delle disponibilità - Dimensioni in mm