

Square decorative screwed hinges

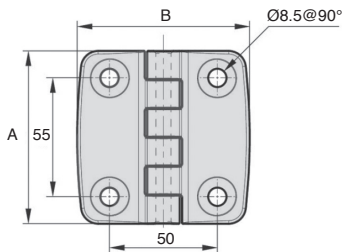
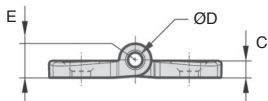


CHAE_{PAC} Polyamide carbon fibre reinforced

- Square screwed hinge
- Max opening angle 270°
- To be fastened with M8 countersunk screws to DIN7991
- Materials
 - Polyamide 6.6 reinforced 30% carbon fibre
 - Pin 303 stainless steel
- Cycling test: hinge is functional after 10.000 cycles (open/close) for a 80 kg door (dimension 1500 (H) x 750 (W) mm)

Advantages

- Aesthetic design
- Stronger and lighter than an equivalent glass fibre polyamide hinge
- Good corrosion resistance (alternative to stainless steel hinges)



DISCOUNTS

Qty	1+	6+	20+	50+
Disc.	List	-5%	-10%	On request

Part number	A	B	C	ØD	E	Weight (g)	Stock*	Price each 1 to 5
CHAE8080/PAC	80	80	7,8	7	8,3	68	-	10,49 €

*Depending on availability - Dimensions in mm