

# New Rectangular hinge, drilled or countersunk

For built-in doors

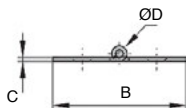
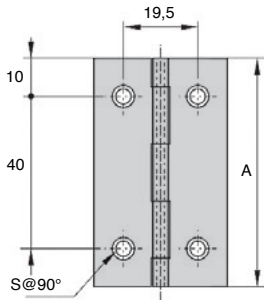
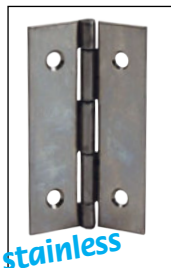
CHA

- Drilled or countersunk hinge

- Materials:

Stainless steel (304)

Natural finish



## DISCOUNTS

Qty	1+	6+	20+	50+
Disc.	List	-5%	-10%	On request

Part number	A	B	C	ØD	S	Type	Weight (g)	Price each 1 to 5
CHA60-35-F/SS	60	35	1	2	4	Countersunk	20	5,68 €
CHA60-35-P/SS	60	35	1	2	4	Drilled	20	5,68 €

Dimensions in mm