

- Ideal for moving large or heavy loads
- Completely smooth surface
- With double hinge
- Materials:
 - Plates: polished cold-laminated stainless steel (30HRC min.)
 - Pin: special stainless steel (41-44HRC)
- Operating temp.: -40°C to +260°C (+120°C in humid environments)
- Length 3048mm (80 plates)

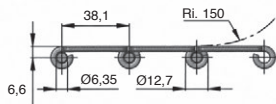
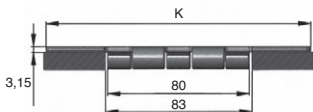
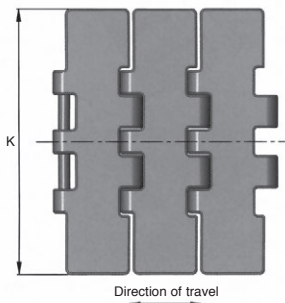


Advantages

- Large width
- High carrying capacity

Associated products

- Drive sprocket **PT821**
- Idler sprocket **PR821**
- Idler **DBL805**



DISCOUNTS

Qty.	1+	5+	10+
Disc.	List	-5%	On request

Part number	Width K (mm)	Length (mm)	Breaking load (N)	Weight (kg/m)	Price each 1 to 4
CAP805-190/SS	190,5	3048	19000	5,8	252,74 €

Dimensions in mm