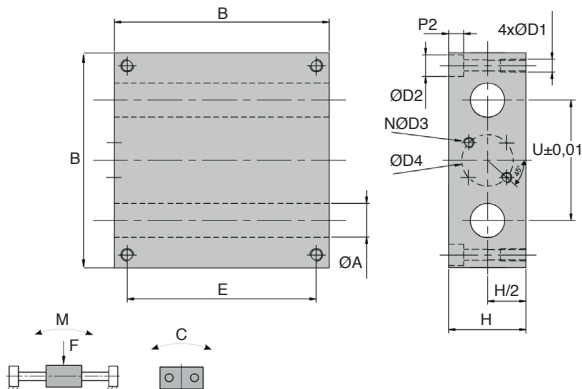
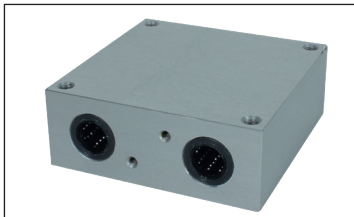


- Block bearings allowing the creation of a linear table with 2 guide shafts
- Supplied with 4 compact linear ball bearings
- Protected with wiper seals
- Working T°: from +5°C to +80°C
- Max speed: 2m/s
- Materials:
 - Housing: anodised aluminium
 - Ball bearing: plastic housing, NBR wipers



Part number	F* (daN)	C* (Nm)	M* (Nm)
BPQ12-4	17 / 10	8 / 5	16 / 10
BPQ16-4	34 / 20	17 / 11	32 / 19
BPQ20-4	64 / 40	29 / 18	55 / 34
BPQ25-4	125 / 80	52 / 30	90 / 60

*load: max values, static / dynamic

DISCOUNTS

Qty	1+	2+	4+
Disc. List	-5%	-	On request

Part number	For shaft										Weight (kg)	Stock*	Price each	
	ØA	B	ØD1	ØD2	ØD3	ØD4	E	H	N	P2				U
BPQ12-4	Ø12	85	M6	10,2	M4	19	73	32	2	7	46	0,53	-	171,38 €
BPQ16-4	Ø16	98	M6	10,2	M5	31	88	36	2	7	56	0,75	-	185,65 €
BPQ20-4	Ø20	130	M8	13,5	M5	31	115	46	2	8	72	1,75	-	236,48 €
BPQ25-4	Ø25	160	M10	17,0	M6	45	140	56	4	11	88	3,20	-	314,50 €

*Depending on availability - Dimensions in mm