

Flanged sheet stainless steel housing for light loads

Flange with 2 mounting holes

BPFLSS

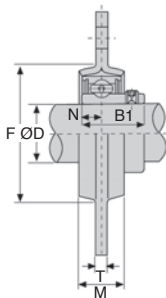
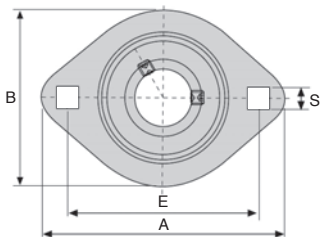
- Palier tôle emboutie
- Matière :
inox

Application

- Mounting a simple bearing, suitable for light loads only

NEW:
stainless steel
range

stainless
steel



DISCOUNTS

Qty	1+	6+	20+	40+	60+
Disc.	List	-10%	-15%	-20%	On request

Part number	ØD	A	E	B	M	S	T	F	Bolt size	B1	N	Weight (kg)	Stock*	Price each 1 to 5
BPFL204/SS	20	90	71	67	16	8,7	2	55,5	M8	25	7	0,22	✓	18,48 €
BPFL205/SS	25	95	76	71	18	8,7	2	60,5	M8	27	7,5	0,27	✓	21,67 €
BPFL206/SS	30	113	90,5	84	18	10,3	2,6	71,5	M10	30	8	0,41	✓	32,11 €
BPFL207/SS	35	122	100	94	20	10,5	2,6	81,0	M10	32	8,5	0,55	-	55,06 €

Dimensions in mm

0 825 88 6000
Service 0,15 € / min
+ prix appel