

- Allows ball pins to be positioned quickly and securely
- Material:
Stainless steel 1.4305 (303)

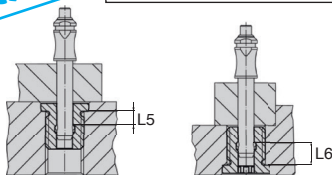
Advantages

- Precision collar means optimised centring
- Simple and safe assembly
- Suitable for use in different materials
- Suitable for use in thin walled materials
- Corrosion resistant
- Wear resistant
- Can be mounted on either side

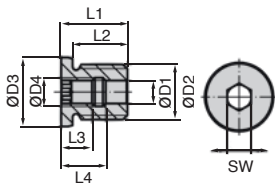
stainless steel



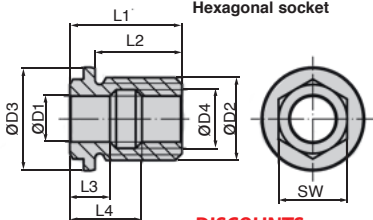
NEW!



Hexagonal head



Hexagonal socket



DISCOUNTS

| | | | | |
|-------|----------|-----------|------------|-----|
| Qty | 1+ | 6+ | 10+ | 25+ |
| Disc. | List -5% | List -10% | On request | |

| Part number | d_1 H11 | ØD2 | ØD3 | ØD4 | L1 | L2 | L3 | L4 | L5 | L6 | SW | Weight (g) | Price each 1 to 5 |
|-------------------------|-----------|-----|-----|------|----|----|------|------|-----|------|----|------------|-------------------|
| Hexagonal head | | | | | | | | | | | | | |
| BAB5-M12 | 5 | M12 | 18 | 6,0 | 19 | 15 | 9,0 | 13,0 | 5,1 | 9,0 | 5 | 15 | 16,57 € |
| BAB6-M12 | 6 | M12 | 18 | 7,5 | 19 | 15 | 9,4 | 13,0 | 5,6 | 8,8 | 6 | 13 | 16,57 € |
| BAB8-M16 | 8 | M16 | 22 | 10,0 | 25 | 20 | 12,0 | 17,0 | 7,3 | 11,7 | 8 | 29 | 24,43 € |
| BAB10-M24 | 10 | M24 | 30 | 12,5 | 29 | 24 | 13,5 | 19,5 | 8,9 | 14,1 | 10 | 75 | 28,36 € |
| BAB12-M24 | 12 | M24 | 30 | 15,0 | 29 | 24 | 14,0 | 20,0 | 9,6 | 14,4 | 12 | 66 | 29,31 € |
| Hexagonal socket | | | | | | | | | | | | | |
| BAB16-M30 | 16 | M30 | 36 | 19,5 | 39 | 29 | 15,5 | 23,5 | 6,1 | 12,8 | 24 | 124 | 32,27 € |
| BAB20-M36 | 20 | M36 | 45 | 25,5 | 49 | 38 | 17,5 | 31,5 | 7,7 | 19,3 | 30 | 208 | 53,75 € |