

Welded lifting ring for 45° lifts

Steel

ASL

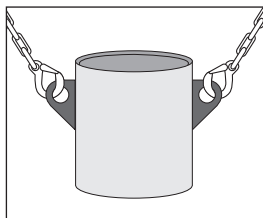
- **Weldable lifting ring**
- Marked with CE symbol, CMU and manufacturer's ref
- Material:
Black unfinished steel

Assembly

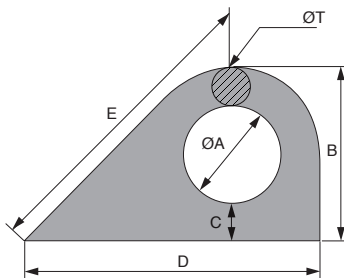
- Installation instructions available on request
- Welding should be done in accordance with DIN 5817 (section 15 429) by an operator qualified to EN287-1

Info.

- The breaking load is obtained by multiplying the SWL by a factor of safety of 5.



Typical application



DISCOUNTS

Qty	1+	6+	20+	50+
Disc.	List	-10%	-20%	On request

Part number	CMU (kg)	ØT	ØA	B	C	D	E	Weight (kg)	Stock*	Price each 1 to 5
ASL31-500	500	12	31	55	13	89	82	0,16	✓	3,81 €
ASL42-1000	1000	14	42	69	13	113	101	0,30	✓	4,86 €
ASL45-2000	2000	18	45	81	18	134	123	0,50	✓	10,09 €
ASL57-3000	3000	21	57	97	19	152	140	0,80	-	16,92 €
ASL65-4000	4000	24	65	113	23	167	155	1,24	-	27,99 €
ASL83-6000	6000	28	83	140	31	218	205	2,36	-	70,16 €

Dimensions in mm

0 825 88 6000
Service 0,15 € / min
+ prix appel

Fax

cial2@hpceurope.com

HPC SUPPLEMENT 2019

225