

# Right angled bracket for aluminium profiles

## ACLEPP Connecting bracket for connecting 2 profiles

- To join 2 profiles at 90°
- Material  
Anodised aluminium  
For use with single slot profiles

### Advantages

- Suitable for use with PRF aluminium profiles

### Info

- No mounting screws supplied

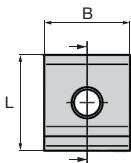


ACL-EPP2-4545

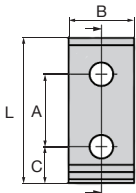
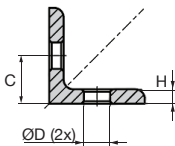


ACL-EPP4-4590

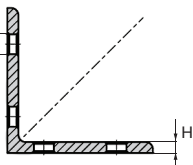
**NEW!**



ACL-EPP2- 4545



ACL-EPP4-4590



### DISCOUNTS

Qty	1+	50+	100+
Disc.	List -5%	On request	

Part number	Version	L	B	H	A	C	ØD	Weight (g)	Price each 1 to 49
ACL-EPP2-4545	2 holes	45	41	6	-	22,5	9	55	2,65 €
ACL-EPP4-4590	4 holes	90	41	6	45	22,5	9	112	5,27 €

Dimensions in mm

# Right angled bracket for aluminium profiles

Connecting bracket for connecting 2 profiles **ACLEPP**

- To join 2 profiles at 90°
- Material  
Anodised aluminium  
For use with dual slot profilest

## Advantages

- Suitable for use with PRF4590 aluminium profiles

## Info

- No mounting screws supplied

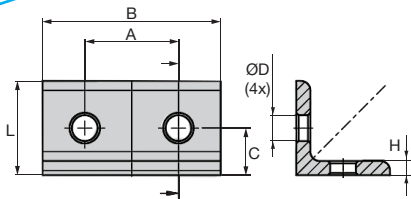
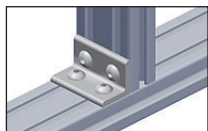


ACL-EPP4-9045

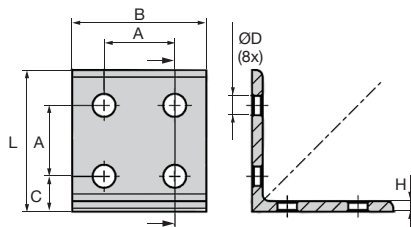
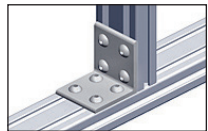


ACL-EPP8-9090

**NEW!**



ACL-EPP4-9045



ACL-EPP8-9090

## DISCOUNTS

Qty	1+	50+	100+
Disc. List	-5%		On request

Part number	Version	L	B	H	A	C	ØD	Weight (g)	Price each 1 to 49
ACL-EPP4-9045	4 holes	45	86	6	45	22,5	9	112	5,45 €
ACL-EPP8-9090	8 holes	90	86	6	45	22,5	9	235	9,76 €

Dimensions in mm